



AUDIO/VIDEO EQUIPMENT

COMPLETE ELECTRONIC SOLUTIONS FOR TRANSPORTATION



CONTENTS

Standard Camera Observation System	4
3D 360° Camera System.....	4-5
Collision Avoidance System	6-7
Surveillance Systems/DVRs/Cameras.....	8-9
Mobile Cellular Wi-Fi Routers.....	10
Surveillance Software	10-11
Announcement/Media Players.....	12-13
HD Monitors.....	14
HDMI E Modules/Amplifiers/Cables.....	15
Double-DIN & Multimedia Radios.....	16
Radios.....	17
Radio Comparison Chart.....	18-19
PA Systems.....	20-21
Accessories.....	22-23
Wired Microphones.....	24
Wireless Microphones.....	25
Antennas.....	26-27
Subwoofer.....	28
Speakers.....	28-31
Radio Harnesses.....	32
Warranty and Support.....	33

Call us for complete solutions.

Elevate your infotainment, safety and efficiency with an all-in-one solutions provider.

REI designs, engineers and services innovative, professional-grade solutions and electronics at our U.S.-based headquarters.

Among our hardware/software roster with 2,000+ products:

- HD multimedia players, HD monitors and radios
- Mobile video surveillance systems
- ARMOR™ Software Suite for automated fleet management
- PA Systems
- Mics/Speakers/Antennas
- Audio and video accessories

We provide integrated, custom configurations to more than 200 vehicle manufacturers, including some of the world's top companies.

REI products are backed with live 24/7/365 Support and an Advanced Exchange Warranty to keep your operations running smoothly.

Call today to get started on complete solutions from the industry leader.

800.228.9275

REI is Superior

- Complete solutions with products and software designed and engineered in the U.S.
- Flexible and scalable software solutions to complement REI hardware
- Live, 24/7/365 in-house Support for greater peace of mind
- Advanced Exchange Warranty – receive a replacement product within two business days at no charge

elevate the passenger experience

- Bus**
 - Motorcoach
 - School
 - Commercial
 - Transit
- Emergency Vehicles**
 - Fire Truck
 - Ambulance
 - Police
 - Mobile Command
- Commercial Truck**
 - Delivery
 - Waste/Refuse
 - Fleet
- Agriculture**
- Construction**
- OEM**
- Dealer Distributors**



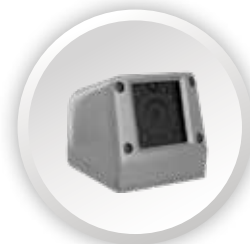
camera observation systems

Standard Camera Observation System

- Several monitor sizes and styles available
- Capture back-up views, turn views and more
- Camera views may be tied to actions like reverse or turn signals
- System is available with several camera options



Available Cameras



Exterior Side-Mount Camera



Surface/Recess-Mount Mini Eyeball Camera



Bullet Wedge Camera



Mini Wedge Back-Up Camera

3D 360° Camera System Sample Views



360° View

3D View



Traffic View



Nighttime View



Lane-Change View



Back-Up View

3D 360° Camera System

REI's 3D 360° technology offers superior visibility for parking and maneuvering in difficult situations. Access comprehensive exterior coverage with panoramic, bird's-eye and 3D views that display automatically depending on the reverse and turn signals selected. Drivers see the most critical areas, like blind spots and around corners.



See sample views on page 5.

Features

- Prevent vehicle damage
- Reduce liability claims
- See small details with 720p HD video
- Connect to any monitor
- Intelligent IR nighttime viewing
- Video recording (micro SD card included)
- Integrates with REI surveillance systems

ADAS & collision avoidance



The interior-mount Mobileye® Collision Avoidance System consistently monitors the road ahead of your vehicle, identifies potentially dangerous incidents and helps drivers prevent and mitigate collisions with real-time audio and visual alerts.

Pedestrian and cyclist collision warning – receive daytime, visual and audio alerts up to two seconds before a collision with a pedestrian or cyclist.



Easy to understand. Easy to install.

Speed limit indicator and traffic sign recognition – receive visual notifications about speed-limit violations. Detect and read signs declared valid by the Vienna Convention on Road Signs and Signals.

Headway monitoring and warning – receive audio and visual alerts if following a vehicle at an unsafe distance.

Forward collision warning – receive visual alerts up to 3 seconds before a collision, allowing enough time to react.

Lane departure warning – receive visual and audio warnings when lane deviations occur without proper signaling.

- Improve safety habits and driver performance
- Lower costs by reducing collisions, fines and insurance premiums
- Increase fuel savings through safer driving habits
- Create safer environments for your drivers, pedestrians and other motorists
- Integrates with REI surveillance systems

surveillance systems

DVRs

HD6 Series 6-Channel



Lightweight, durable and designed with innovative features, REI DVRs record crystal-clear video, audio and vehicle data on removable hard drives. Connect up to 12 cameras to capture stunning, surveillance views.

Benefits

- **Versatility** – connect up to 12 HD cameras for interior and exterior views
- **Enhanced clarity** – see small details with up to 1080p HD video available on all channels
- **Durability** – vibration dampening integrated into hard-drive housing
- **User-friendly** – configure for iOS or Android™ handheld devices
- **Dependability** – operate to -40° F with integrated heater
- **Security** – maintain privacy with optional front and rear covers
- **Safety** – consistent, regulated power to all cameras, external devices and peripherals
- **Integration** – optional built-in cellular router eliminates need for add-on router
- **Fast** – upgrade to solid-state drive for improved performance

HD5 Series 12-Channel



Features

- **HD** – up to 1080p HD video on all channels
- **ULTRA HD** – 4K UHD IP channels
- **GPS** (optional)
- **internal cellular modem** (optional)
- **fast 802.11ac Wi-Fi** (optional)
- **event marker** (optional)
- **full-frame rate up to 30 fps/channel**
- **H.264 triple-streaming** (H.265 - HD6 only)
- **optional accelerometer** (HD5) or built-in (HD6)
- **up to 4 TB hard drive or solid-state hard drive**
- **up to 512 GB SD card** (optional)
- **lockbox** (built-in or optional)
- **extruded aluminum chassis**
- **fanless enclosure**
- **eight sensor triggers**

SD-300 Camera Surveillance System

3-Channel DVR



Cost-effective, yet powerful, this solution delivers crisp, HD images and reliable, long-lasting performance. It accommodates up to three cameras for capturing events in and around your vehicles - even small details.

Benefits

- **Versatility** – connect up to three HD cameras for interior and exterior views
- **Enhanced clarity** – see small details with HD video available on all channels
- **Privacy** – encrypted image captures ensure confidentiality and eliminate chain-of-evidence concerns
- **Security** – optional, locking front and rear covers
- **Password protection** – only those with authorized passwords may access

Features

- **HD** – two AHD cameras @ 720p
- **ULTRA HD** – one IP camera @ 1080p
- **GPS receiver included**
- **4G cellular** (optional)
- **fast 802.11n Wi-Fi**
- **event marker** (optional)
- **two SD cards** (sold separately)
- **H.264 double streaming**
- **accelerometer** (optional)
- **fanless enclosure**
- **lockbox** (optional)
- **extruded aluminum chassis**
- **seven sensor triggers**

Available Cameras

Top-Selling Cameras



Eyeball AHD Camera

Mini Box AHD Camera

Mini Dome IP or AHD Camera

Windshield-Mount AHD or IP Camera

Mini Eyeball Camera

Wedge Stop-Arm Camera



Mini Box Camera
(view of passengers)

Windshield-Mount Camera with IR
(view of passengers)

Windshield-Mount Camera
(forward exterior view)

NVR IP Mini Dome
(view of passengers or forward exterior view)

NVR IP Wedge
(view of passengers or forward exterior view)

ARMOR™ Software Suite

How It Works



Vehicle is equipped with a Wi-Fi or cellular DVR, or cellular router.

Recorded events and metadata are transferred to access points when your vehicle returns to the lot, or by a cell tower right after the incidents occur, or at preconfigured times.



Video and metadata is stored on a local server or in ARMOR Cloud.

Server data is accessible wirelessly on handheld devices.



ARMOR Modules

Administration – establish users, credentials and notifications

Dashboard – monitor events, select reports and analyze data

AutoPilot – review video events/reports and request automatic video downloads

Diagnostics – monitor health of REI equipment and your vehicles

Insight – track historical routes and current locations of fleet vehicles

Live – monitor audio/video from multiple vehicles en route



Automate and simplify fleet management with our web-based software solution. Access its innovative, adjustable modules wirelessly to set up and monitor fleet details using internet-connected devices.

For added convenience, REI offers ARMOR™ Cloud, an optional server management service. ARMOR data, software updates and scalability are maintained for you by REI.



Mobile Cellular Wi-Fi Routers



REI's mobile cellular routers provide reliable, onboard Wi-Fi access. Built specifically for transportation providers, they're durable, affordable and easily installed.



Flexibility is paramount at REI. We provide adjustable solutions to handle fleets' diverse demands.

ARMOR is an expansion of our free VMS (Video Management Software) and features new and enhanced capabilities. More importantly, it automates the entire fleet management process to save you time and money.

Increase Productivity

Improve Efficiency

Save Time & Money

Maintain Peace of Mind

	VMS Software	ARMOR Software Suite
Individual vehicle information	✓	✓
Fleet vehicle information	✓	✓
View on PC through hard drive, SD card, flash drive, or remotely through Wi-Fi or cellular service	✓	✓
Zoom, snapshot, and blur features	✓	✓
Graph speed, acceleration, voltage, and temperature	✓	✓
Track up to 8 inputs of a vehicle	✓	✓
Track g force alarms for excessive acceleration, hard braking, or collisions	✓	✓
Monitor passive location and speed of a vehicle	✓	✓
Search function for metadata using "or" metrics	✓	✓
Save or convert clips for later viewing and sharing	✓	✓
Accessible through any device with an internet connection		✓
Alarmed or manually requested events are automatically downloaded as soon as the vehicle returns to lot		✓
Share video within or outside your organization with no video conversion or software		✓
Ability to lock video from being overwritten to archive until unneeded		✓
System health checks every time a vehicle starts and returns to the lot letting you know your investment is running properly		✓
Vehicle checks through J1939 on board computer takes a proactive approach to vehicle maintenance		✓
Configure the DVR from anywhere over the net and view the camera live		✓
Track individual vehicles, entire fleet or groups in real time		✓
Plot, export, or request video using multiple "and/or" metrics		✓
Advanced graph feature graphs out information from vehicle computer such as RPM, odometer levels, tire pressure, and fuel levels		✓
Track and export driver performance based on customizable parameters		✓

announcement/media players

Inform and entertain passengers with vivid, automated messaging from REI digital media players. Each is a versatile, reliable unit for playing onboard safety, infotainment and advertising messages in true 1080p. Even more, every player is tested to withstand vibrations, extreme temperatures and constant use.

Features

- Directional GPS (MP-5000HD only)
- True 1080p high-definition playback
- Priority message override
- DOT compliance logging
- AUX audio and video inputs to interface with existing entertainment systems
- Automatic and continuous playback
- Easy-to-use interface
- Multilingual audio playback (requires separate multilingual media)
- USB file transfers

Applications

- Passenger safety announcements
- Advertising – cross-promote trip tours and events
- Infotainment
- Scenic tour videos
- Automatic and continuous-play announcements
- Stop/start priority messages remotely with KP-1000 Driver Controller



MP-1200HD Announcement/Media Player With Passenger Safety Messaging

The MP-1200HD is a powerful unit engineered for convenience and precision. It is capable of playing up to four strings of digital announcements and features external I/O triggering for activating messages and videos automatically when events like door openings and wheelchair lifts occur. Pair it with REI high-definition monitors to create a superior passenger experience.

KP-1000 Driver Controller

Equip your driver with remote-control convenience to:

- Automate content playback
- Play custom and prerecorded content
- Interact with vehicle's media system
- Load multiple tours in multiple languages



Rocker Switch

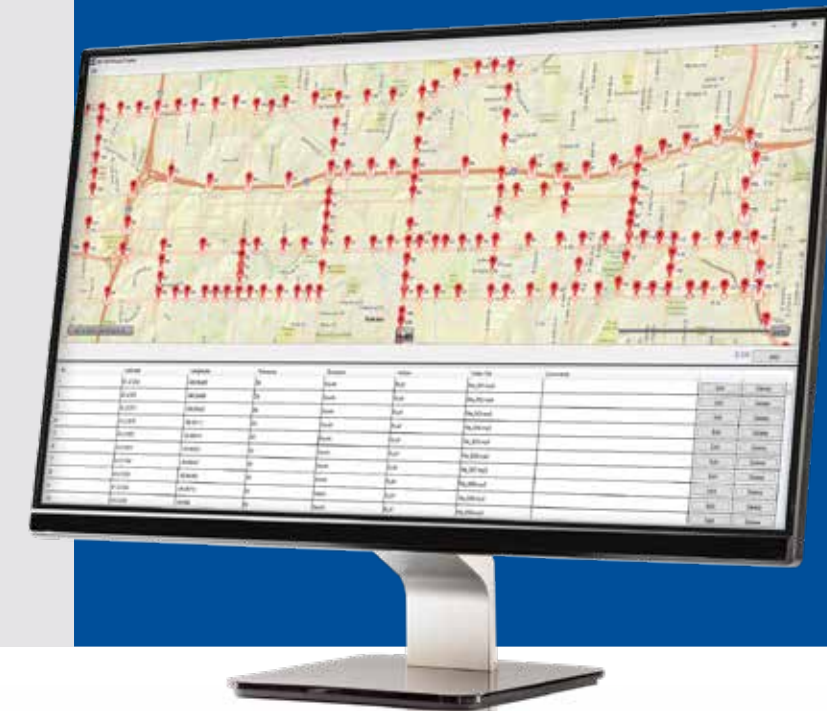
Start/stop priority messages remotely with a simple press.



UMA-approved motorcoach safety video included. Safety video will be displayed on all monitors.

MP-5000HD Announcement/Media Player with Directional GPS and Passenger Safety Messaging

The MP-5000HD is an intelligent player featuring GPS-prompted capabilities, like route-specific advertising and geofence violation notifications. Other highlights include auto pause for external interaction, 200+ GPS points, scalability for serial communication plus all the features of our MP-1200HD player. Connect to REI HD monitors for brilliant, dependable messaging.



REI HD monitors provide stunning viewing experiences. With brilliant color, dramatic contrast and impeccable image clarity, your passengers and drivers will see details at their very best. Choose from several styles in a variety of sizes.

REI's professional-grade HDMI components offer an enhanced experience for next-generation infotainment systems and HD entertainment solutions. Approved by the HDMI Association, our units provide HD image quality and reliable data transmission, making them ideal for mobile and commercial applications.



Ultrawide Wall-Mount HD Monitor

Available size: 37"

- 32:9 aspect ratio
- 178° viewing angle
- 24V
- BNC composite video input
- 2 Vp-p composite video/HDMI
- HDMI A video input
- Remote control

Six-Channel Video Source Selector With HD Output

- Three composite analog inputs with 1080p upscaling
- Three HD digital inputs
- One HD digital output
- HDMI ver. 1.3 certified
- HDCP compliant
- One digital audio output
- One analog audio output
- Manual/auto source detect
- Serial communication
- Input voltage range: 8 to 32 volts
- Professional-grade locking type-E HDMI connectors



Wedge HD Monitors

Available sizes: 15.6" • 19"

- Wide screen
- LED backlight
- 12/24 volt
- .7 to 2 Vp-p composite video
- HDMI A, E
- Remote control



Flip-Down HD Monitors

Available sizes: 10.1" • 15.6" manual • 19" motorized

- Wide screen
- LED backlight
- 12/24 volt
- BNC composite video input
- HDMI HD video input
- HDMI E input (15.6" and 19" units)



Wall-Mount HD Monitors

Available sizes: 10.1" • 15.6" • 21.5" • 23.8" • 27"

- Wide screen
- LED backlight
- 156° - 160° viewing angle
- 12/24 volt
- BNC composite video input
- HDMI A video input
- HDMI E input (15.6" size only)
- Remote control



Ask about mount railing kits and hardware to secure your monitors.

EDA-1004HD



HDMI E Distribution Amplifier

- One HD digital input
- Four HD digital output
- HDMI ver. 1.3 certified
- HDCP compliant
- Two power in/out connectors
- Input voltage range: 8 to 32 volts
- Professional-grade locking type-E HDMI connectors

HDMI E Cables

REI's HDMI E connector is highly durable, positive locking, simple to use and ensures a reliable connection in the harshest conditions. It has become a critical component in the design of professional-grade, next-generation vehicle entertainment systems. This cable replaces the standard HDMI connector, which is a nonlocking connector and not durable enough for mobile and commercial applications.



double-DIN & multimedia radios

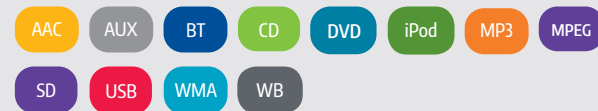
ECVR-6700T Dual-Zone Multimedia Controller



Features

- Large 6.2" touch screen
- Center-console control of driver/passenger zones
- Independent controls for all sources
- Split-screen view of zone controls
- 18 FM, 6 AM station presets
- HDMI output for true 1080p playback (HDMI E cable required)
- J1939 CAN-bus interface to monitor vehicle/REI equipment health (optional)
- Compatibility with most handheld devices and audio/video formats
- Driver auxiliary input
- Integrates with ADAS to show 360° views, rear cross traffic, etc. (cable 512956 required)

VR-6200D Wide-Screen Multimedia Radio



Features

- 18 FM, 12 AM station presets
- 6.88" capacitive touchscreen
- Radio Data System (identify artist, song, etc.)
- Bluetooth® audio streaming and hands-free calling
- Front USB (type-A)/microSD inputs
- Front- and rear-view camera inputs
- CD/DVD player
- Front/rear/subwoofer line-level audio pre-outs
- Android device control/mirror via USB Autolink Multimedia App
- PA microphone input
- Wireless remote control

VR-5650 DVD Radio



Features

- Customizable dot matrix display with amber backlighting
- Display inversion and contrast adjustments
- OEM buttons with rubber keypad (vs. tactile switches)
- Electronic AM/FM/WB stereo tuner
- Preset up to 30 radio stations (18 FM, 12 AM)
- EURO and USA frequency bands
- Front AUX 3.5 mm input
- Rear A/V RCA inputs
- Supports USB MP3/WMA playback with ID3 tag support and MPEG-1/MPEG-2 playback with 1.5A charge
- iPod®/iPhone® playback control
- PA microphone input

radios

Engineered in the USA with professional-grade components and top-quality materials, REI radios, mount kits and harnesses withstand harsh conditions. Each is tested extensively to provide excellent performance in environments subject to vibration, dynamic loads, extreme temperatures and humidity. REI has several kits and harnesses available for radio mounts in vehicles from GM, Ford, Dodge, Sprinter, Blue Bird, IC, Thomas and many others.

ST-5050 Bluetooth® Radio



- 2.93" shallow-depth chassis
- Bluetooth audio streaming and hands-free calling
- NOAA weather band tuner
- 18 FM, 12 AM station presets
- AM/FM tuner with USA/Euro Band
- RDS to display information by radio stations
- Front 3.5 mm audio input jack
- Mic input for PA announcements
- Rear RCA auxiliary audio input jacks
- Rear USB input for phone charging and digital music file playback
- D6/ISO connector

ST-4050 AM/FM/WB Radio



- 2.93" shallow-depth chassis
- NOAA weather band tuner
- 18 FM, 12 AM station presets
- AM/FM tuner with USA/Euro Band
- RDS to display information by radio stations
- Front 3.5 mm audio input jack
- Mic input for PA announcements
- Rear RCA auxiliary audio input jacks
- Front USB input for phone charging and digital music file playback
- D6/ISO connector

ST-1000 AM/FM/WB Radio



- 12 volt
- 2.75" shallow-depth chassis
- NOAA weather band tuner
- 18 FM, 12 AM station presets
- AM/FM tuner with USA/Euro Band
- Front 3.5 mm audio input jack

ST-1000 Radio Kit



- ST-1000 AM/FM weather band stereo radio
- Black ABS plastic radio and speaker housing
- Two 5" full-range speakers (220035)
- Flexible AM/FM antenna with 60" cable (210066)

radio comparison



ECVR-6700T



VR-6200D



VR-5650



ST-5050



ST-4050



ST-1000

	ECVR-6700T	VR-6200D	VR-5650	ST-5050	ST-4050	ST-1000
DVD	•	•	•			
CD with anti-skip mechanism	•	•	•			
MP3/WMA playback	•	•	•	•	•	
Front-panel SD/SDHC card input		(uSD)				
USB						
Front-panel type-A input		(USB-A)		•	•	
Rear type-A input	• (Dual)	•	•	•		
Cellphone charge port in USB mode	• (1.5A)	• (1A)	• (1.5A)	• (1.5A)	• (1.5A)	
Bluetooth®						
Audio streaming (A2DP)	•	•	•	•		
Hands-free calling (HFP)	•	•	•	•		
iPod®/iPhone® ¹						
Built-in iPod® charging	•	•	•	•	•	
Built-in iPhone® charging	•	•	•	•	•	
Built-in iPod® controls	•		•	•	•	
AUX						
Front panel connects iPods, MP3 players and portable media players		•	•	•	•	•
Rear/RCA audio input jack	•	•	•	•	•	
PA						
Integrated PA	•	•	•	•	•	
Dynamic microphone PA input	•	•	Selectable Menu-1 (4 Pin)	Selectable Menu-1 (4 Pin)	Selectable Menu-1 (4 Pin)	
Carbon microphone PA input			Selectable Menu-1 (4 Pin)	Selectable Menu-1 (4 Pin)	Selectable Menu-1 (4 Pin)	
Adjustable PA zone output (front/rear/both)			•	•	•	
WB (Weather Band)	•		•	•	•	•
Radio chassis connector	ISO	ISO	ISO	ISO	ISO	ISO or D6
Preset stations	18 FM / 12 AM 7 WB	18 FM / 12 AM	18 FM / 12 AM 7 WB	18 FM / 12 AM 7 WB	18 FM / 12 AM 7 WB	18 FM / 12 AM 7 WB
Power rating	50 watts x 4	50 watts x 4	50 watts x 4	50 watts x 4	50 watts x 4	50 watts x 2
USA/EURO radio frequency modes	•	•	•	•	•	•
Station presets stored during power loss	•		•	•	•	•
Clock	•	•	•	•	•	•
Clock backup	•		•	•	•	
RDS text ²	•	•	•	•	•	

¹ Early-model iPods are not supported because they do not implement the USB control protocol. They may be connected to the radio using auxiliary inputs if available.

² Radio stations that broadcast RDS may not be available in your listening area.



PA systems

One- and Two-Channel PA Amplifiers



Front View



Back View

- 8"L x 3.125"W x 1.75"H
- Two microphone inputs
- 50-watt power output
- XLR priority microphone input overrides Mini-Fit™ secondary microphone input
- Volume control and AUX audio input (one-channel)
- Separate internal/external volume control and AUX audio input with speaker selectability (two-channel)
- Approved OEM standard option equipment



ECHO PAs

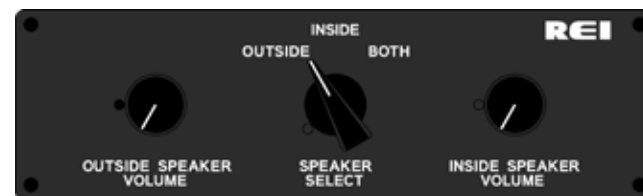
Voice-Record Dash Model

- 4.16"L x 8"W x 1.88"H panel
- 12/24 volt/50-watt power output
- Single microphone input with priority control* (Mini-Fit™ connector)
- Internal microphone with AUX microphone input
- Internal and external speaker volume controls
- Approved OEM standard option

*Microphone not included

Two-Channel Transit PA Amplifier

With Remote-Mount Volume Control Panel



- 8"L x 2.375"W
- Remote panel-mounted internal and external volume control



Front View



Back View

- 8"L x 3.125"W x 1.75"H
- Two microphone inputs
- AUX audio input



Panel-Mounted PA Amplifier

- 7"L x 2"H panel
- 12-volt/40-watt power output
- Single channel
- Two microphone inputs with priority control (Microphone not included)

Four-Channel Transit PA Amplifier



- 4" L x 2.05" W x 1.88" H
- Output cable to speakers
- 42 watts x 4
- Input cable from radio
- Easily integrates with OEM equipment
- Steel housing for easy installation
- Uses Dynamic Hand-Held Mic (#480343)



Panel-Mounted PA Systems

- 12-volt/25-watt power output
- Single channel
- Volume control
- Interior/exterior speaker selection (not included on 7"L x 2"H panel)

Passenger seatback audio

REI's individual headphone systems have no moving parts and feature dependable audio control modules and the latest technology for stereo sound at every seat. Passengers simply plug in their headphones, set their own volumes and choose from a variety of sources: AM/FM CD players, SAT radio, DVD, digital video and digital audio players. All sources allow for driver PA overrides and tour guide announcements. Passengers who wish to read or sleep while traveling will not be interrupted by interior speaker systems.

Multilingual Tour Capabilities

The combination of the REI passenger headphone system and the REI eight-channel digital MP3 audio player is the ultimate way to provide multilingual tours. Record tour and stop information in up to eight different languages and provide each passenger with a language choice on his/her seatback audio module.

Seat audio system bill of material depends on type of vehicle, seat configuration and desired features. Contact your REI representative for assistance.

Ambient-Noise Sensor Kit



Ambient-Noise Module



Sensor Microphone

- 3" x 5.25" panel
- Automatically adjust volume to compensate for noise levels
- 12-volt/25-watt power output
- Manage noise levels around rear engine, doors and external speakers



30 mm Stereo Headphone

- 46" cable with right-angle 3.5 mm plug
- Adjustable headband with rotating earpads
- 32 OHMS impedance



USB Panel-Mount With Weather-Resistant Cover



Multimedia Panel

- 3.5 mm audio input
- HDMI A input
- USB type-A input



Seatback Audio Module

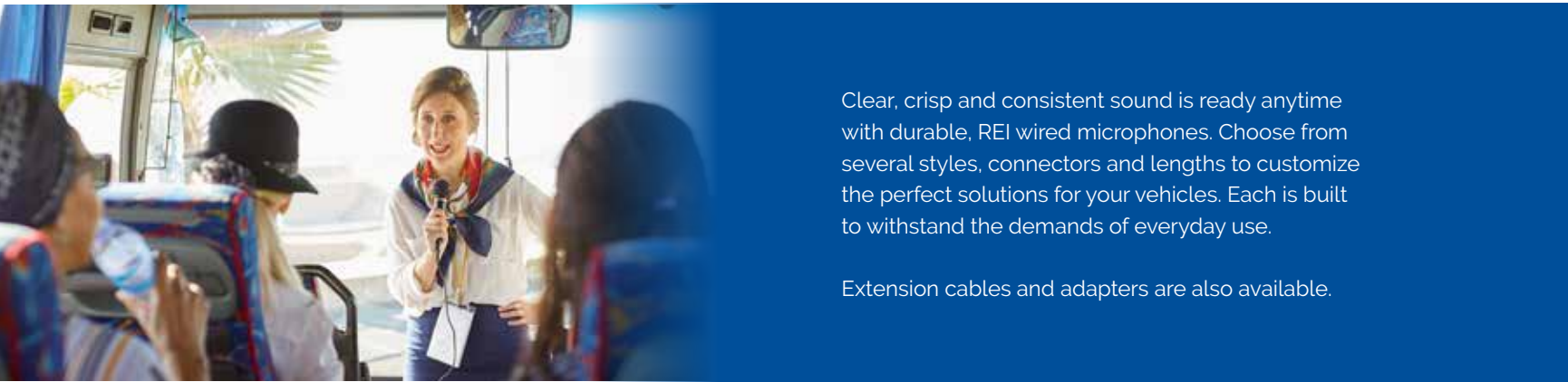
- 1-8 channel capability
- Digital LED channel display
- Individual volume control
- Tamper-resistant design
- 3.5 mm headphone jack
- 0.5" seat mounting depth



Emergency Lighting Module

Strengthen passenger safety in the event of a rollover, accident or change in normal travel motion. Illuminate your vehicle's interior lighting automatically. This plug-and-play solution provides valuable assistance during rescue and emergency efforts.

wired microphones



Clear, crisp and consistent sound is ready anytime with durable, REI wired microphones. Choose from several styles, connectors and lengths to customize the perfect solutions for your vehicles. Each is built to withstand the demands of everyday use.

Extension cables and adapters are also available.

dynamic microphones

Handheld Microphone



Entertainment-Style Microphone and Cable



Dynamic Headset Microphone (Hands-Free Use)

Belt-Clip Preamp (Hands-Free Use)



Plunger-Style Foot Switch In Metal Housing



carbon microphones

Handheld Microphone

gooseneck microphones

REI offers more than 30 different styles of gooseneck microphones. Call for details.



Slimline Mini Gooseneck Microphone



Vandal-Resistant Gooseneck Microphone



Gooseneck Microphone

wireless microphones

Features

Wireless Handheld Microphone

- Digital LCD display
- 100 selectable channels
- On/off switch
- Battery level indicator
- Easy infrared pairing
- Standby mode for faster response
- Up to eight hours of continuous use
- Rechargeable
- Requires two rechargeable AA batteries
- Frequency range: UHF 530-570 MHz

Charging Station

- 12/24 volt
- LED indication of charge status
- Universal station for handheld microphone and belt-pack transmitter
- Refresh cycle to ensure optimum charge

Receiver

- Full-status LCD display
- Dual band with 100 channels per band/200 total
- Radio signal and audio level indicators
- 12/24 volt
- Power on/off switch
- Automatic infrared pairing
- Frequency range: UHF 530-570 MHz

Belt-Pack Transmitter

- Digital LCD display
- 100 selectable channels
- Three-pin mini XLR receptacle
- On/off switch
- Battery level indicator
- Easy infrared pairing
- Standby mode for faster response
- Up to eight hours of continuous use
- Rechargeable
- Requires two rechargeable AA batteries
- Frequency range: UHF 530-570 MHz

Headset Microphone

- Lightweight: 1.1 oz.
- Frequency response: 100-10 kHz

Lapel Microphone

- Unidirectional microphone with spring clip
- Four-foot cable with three-pin mini XLR connector

REI's lightweight, wireless microphones combine professional-quality sound and convenience to meet unique demands like those of tour guides and karaoke participants. Handheld, lapel and headset models are available for users that prefer a more personalized approach to entertaining and engaging travelers.



Wireless Mic & Charging Station



Receiver



Belt-Pack Transmitter



Headset Mic



Lapel Mic

antennas

Reception is crucial to keep passengers satisfied. Stay connected with REI antennas and extension cables, available in a variety of lengths. From simple AM/FM radio antennas to models for CB radios, you're never far from music, news and conversation.

Flexible AM/FM Antennas

Universal-Mount Antenna



- Flexible, rustproof, wire-wound mast with rubber coating
- Split-ball adjustable base with included 60" antenna cable
- Male Motorola® plug

ITEM	PART #
Flexible AM/FM antenna with 60" Cable	210066
Flexible AM/FM antenna with 82" Cable	210056
Flexible AM/FM antenna with 192" Cable	210123
Replacement rubber mast	210067



- Flexible, rustproof, wire-wound mast with rubber coating
- Split-ball adjustable base
- Three-hole surface mount
- Male Motorola® plug
- Requires 23' cable
 - Heavy-duty shielded cable jacket
 - Grounding strap

ITEM	PART #
Flexible AM/FM universal-mount antenna	210081
23' cable	530060

AM/FM Steel Mast Antenna

Side-Mount Antenna



- Single-section 31" steel mast
- Side-mount, heavy-duty spring
- Includes 54" detachable antenna cable
- Male Motorola® plug

ITEM	PART #
AM/FM steel mast side-mount antenna	210015
Replacement mast	210137

Telescoping Antennas



- 96" four-section telescoping steel mast
- Dual mounting points
- Includes 96" antenna cable
- Male Motorola® plug

ITEM	PART #
AM/FM steel mast telescoping antenna	210000

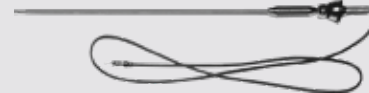


- Pillar mount

ITEM	PART #
Telescoping antenna with 48" cable	210018

AM/FM Top/Side Antenna

Universal-Mount Antenna



- Single-section 31" steel mast
- Universal top- or side-mount, heavy-duty spring
- Includes 54" antenna cable
- Mast adjustable to 180°
- Male Motorola® plug

ITEM	PART #
AM/FM top/side universal-mount antenna	210098

CB Antenna



- 26.965 MHz frequency
- CB band 11 meter channels 1-40
- Single-section spring-loaded 14" mast
- Oval base
- PL259 connector
- Male Motorola® plug
- Requires 21' cable
 - Heavy-duty shielded cable jacket
 - PL259 connectors
 - N connector adapter

ITEM	PART #
CB antenna	210108
21' cable	511132

AM/FM Amp. Dodge®/Mercedes®

Sprinter Van Antenna



- Includes 15" removable black fiberglass mast
- Includes 12" coax cable and power supply wire
- Male Motorola® plug

ITEM	PART #
AM/FM amplified Dodge®/Mercedes® Sprinter van antenna	210129

FM Signal Booster

- Amplifies FM signal an average of eight times
- Improves radio reception
- Extends station range
- Two volts maximum total input
- Male Motorola® plug



ITEM	PART #
FM signal booster	210103

AM/FM Silver GM® Antenna

(1982 Models and Later)



- 31" steel mast
- Universal base with five fixed-angle pieces
- Includes 72" antenna cable
- Male Motorola® plug

ITEM	PART #
AM/FM Silver GM® antenna	210131

AM/FM Shark Fin Antenna



ITEM	PART #
Antenna, shark fin AM/FM with integrated amplifier	210145
36" shark fin integrated antenna/power cable, shark fin antenna to radio (Motorola® male and 12-volt power wire)	530171
276" shark fin integrated antenna/power cable, shark fin antenna to radio (Motorola® male and 12-volt power wire)	530170

Note: 530170 or 530171 power cable required.

AM/FM Ford® Econoline Van Antenna

(1979 Models and Later)



- 31" steel mast
- Oval base antenna
- Includes 72" antenna cable
- Male Motorola® plug

ITEM	PART #
AM/FM Ford® Econoline van antenna	210127

AM/FM Dodge® Full-Size Van Antenna

(1995 Models and Later)



- 39" three-section mast
- Side-mount base
- Includes 60" detachable antenna cable
- Male Motorola® plug

ITEM	PART #
AM/FM Dodge® full-size van antenna	210128

Data Transmission/LTE Antennas

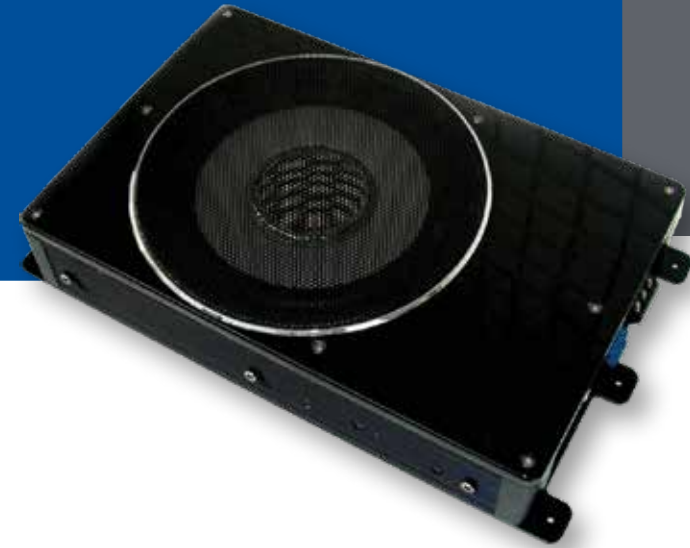
Roof-Mount Antenna



- Permanent, M16 stud mount
- Includes 17"-20' attached antenna cable(s)
- SMA male connector(s)

ITEM	PART #
LTE antenna with 20' cable	210172
LTE antenna with two 17' cables	210174
LTE antenna with Wi-Fi, GPS, two 20'cables	210173

subwoofer



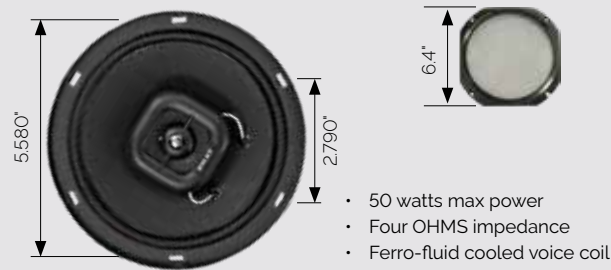
Immerse your passengers in a theater-like travel experience with crisp, robust sound. Deep, rich subwoofer bass plays all the right low notes to complement the high notes from our powerful speakers. Choose from several models to enrich your onboard entertainment.

8" Subwoofer – Active

- 150 watts max power
- Low profile for under-seat mounting
- 15.25"L x 8.9"W x 2.7"H

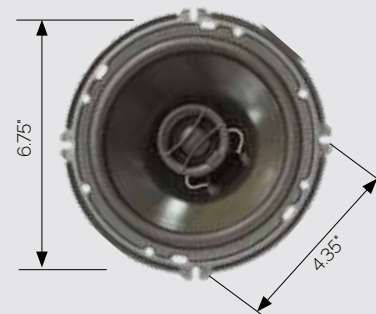
ITEM	PART #
8" Subwoofer with built-in 12/24 volt amplifier	230067
Subwoofer with standard National® mount	710518

Coax Speakers



- 50 watts max power
- Four OHMS impedance
- Ferro-fluid cooled voice coil

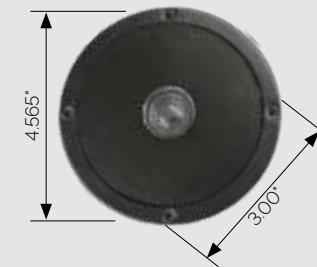
ITEM	PART #
5.25" Coax speaker	220049
Grille	240032



- 150 watts max power
- Four OHMS impedance
- Two-way coax

ITEM	PART #
6.75" Speaker	220096

4" One-Piece Speaker With Grille



- Dual-cone speaker
- 30 watts max power
- Four OHMS impedance

ITEM	PART #
4" One-piece speaker with grille	220078

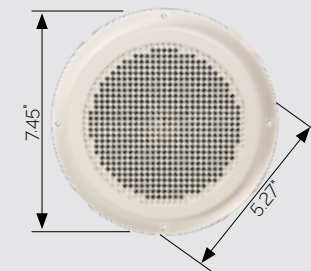
5.25" Speaker With Poly Cone



- 100 watts max power
- Four OHMS impedance
- 1" dome tweeter

ITEM	PART #
5.25" Speaker with poly cone	220067
Grille	240060
Speaker and grille	220094

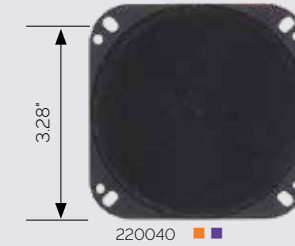
6" Speaker With 0.5" Depth Grille



- 25 watts max power
- Eight OHMS impedance
- Weather resistant

ITEM	PART #
6" Speaker with 0.5" depth grille	230052
Includes harness with two-pin weather pack plug	230053
Replacement grille	240067

4" Speakers

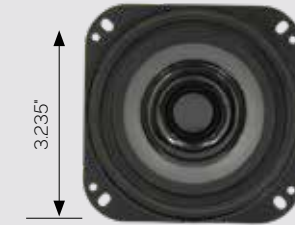


- Full-range speaker
- 30 watts max power
- Four OHMS impedance

220040



240027



- 25 watts max power
- Eight OHMS impedance
- Poly speaker cone
- Solid mylar voice coil cap
- Butyl rubber surround
- Includes harness with two-pin weather pack connector

220089

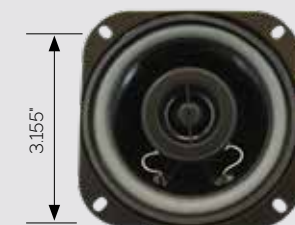


- 25 watts max power
- Four OHMS impedance
- Poly speaker cone
- Solid mylar voice coil cap
- Butyl rubber surround

220010



240078



- 45 watts max power
- Four OHMS impedance
- Two-pin harness plug
- 1" dome tweeter

220062

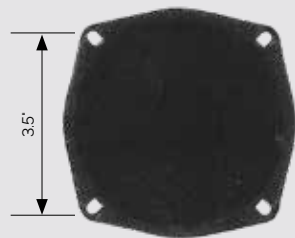
ITEM	PART #
4" Speaker	220040
4" Weather-resistant speaker	220010
4" Weather-resistant speaker with harness	220089
4" Coax square speaker	220062
Grille	240027
Grille	240078
4" Coax square speaker with grille	231003

INCLUDES:

4" Coax square speaker (220062) and grille (240078)

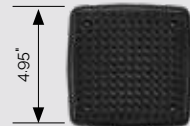
speakers

5" Speakers



220035 ■

- Full-range speaker
- 30 watts max power
- Four OHMS impedance



■ 240040



220073 ■

- Coax speaker design
- 70 watts max power
- Four OHMS impedance
- 1" dome tweeter

ITEM	PART #
5" Speaker	220035
5" Coax speaker	220073
■ Grille	240040

Speakers With Brackets



Dome Tweeter with Mount Bracket

- 20 watts max power
- 20 mm tweeter
- 92 dB SPL
- Silk dome tweeter

ITEM	PART #
Dome tweeter with mount bracket	231007
Dome tweeter with MCI mount bracket	231002



5.25" Speaker with Bracket

- MCI E/J coach
- 100 watts max power
- Low-profile 1" dome tweeter
- Includes harness with 2-pin Mini-Fit™ connector

ITEM	PART #
5.25" Speaker with bracket	231010

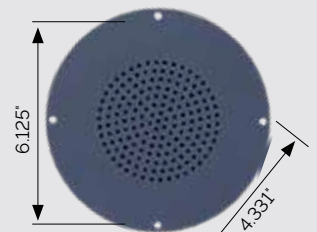
Speakers With Grilles



6" One-piece

- Dual-cone speaker
- 30 watts max power
- Four OHMS impedance

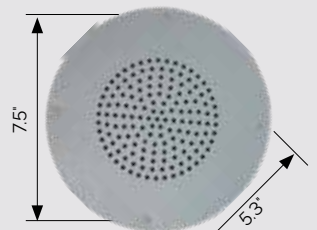
ITEM	PART #
6" One-piece speaker with grille	220026



4" or 5" with 6.625" gray metal grille

- 30 watts max power
- Four OHMS impedance

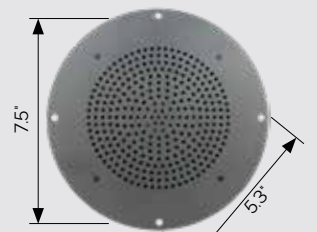
ITEM	PART #
4" Speaker	230011
5" Speaker	230002
4" Replacement grille	240015
5" Replacement grille	240011



4" with 6.625" aluminum grille

- 25 watts max power
- Eight OHMS impedance
- Weather-resistant speaker cone
- Stud mounted

ITEM	PART #
4" Speaker with 6" aluminum grille	230065
Replacement grille	240082



6" with 8" aluminum grille

- 25 watts max power
- Eight OHMS impedance
- Weather-resistant speaker cone

ITEM	PART #
6" Speaker mounted on 8" aluminum grille	230061
Replacement grille	240079

Speakers In Housings



- 4" Coax speaker
- 45 watts max power
- Four OHMS impedance

ITEM	PART #
4" Surface-mount speaker in ABS enclosure (includes two speakers)	760939



- Metal housing
- Includes:**
- Two grilles (240017)
- 18" Dynamic cable (512679) 90° 4-pin XLR microphone jack to 4-pin female Mini-Fit™

ITEM	PART #
4" Speaker/grille and integrated microphone jack (includes two speakers)	230072



- 5.42"L x 4.3"W x 5.42"H
- Coax speaker design
- 70 watts max power
- Mounting bracket included

ITEM	PART #
5" Speaker dual cone (pair in housings)	760663
5" Speaker two-way coax (pair in housings)	760622



- 4" two-way coax speakers
- 30 watts max power
- Four OHMS impedance

ITEM	PART #
4" Speakers in black, waterproof housings	230073



- Four OHMS impedance
- 15 watts max power
- Adjustable mounting bracket

ITEM	PART #
3" Enclosed speaker (includes two speakers)	230068

Exterior Speakers

Weather Resistant



4" Speaker with non-louvered aluminum grille

- 6.5"L x 4.75"H grille
- 25 watts max power
- Eight OHMS impedance
- Poly woofer cone
- Includes harness with 2-pin Weather Pack connector



5" PA horn

- 15 watts max power
- Aluminum housing
- Eight OHMS impedance
- Adjustable mounting bracket



8" PA horn

- 30 watts max power
- Four OHMS impedance
- Metal housing
- Adjustable mounting bracket

ITEM	PART #
4" Speaker with non-louvered aluminum grille	230058
Replacement grille	240076
5" PA horn	220022
8" PA horn	220031PA

radio harnesses

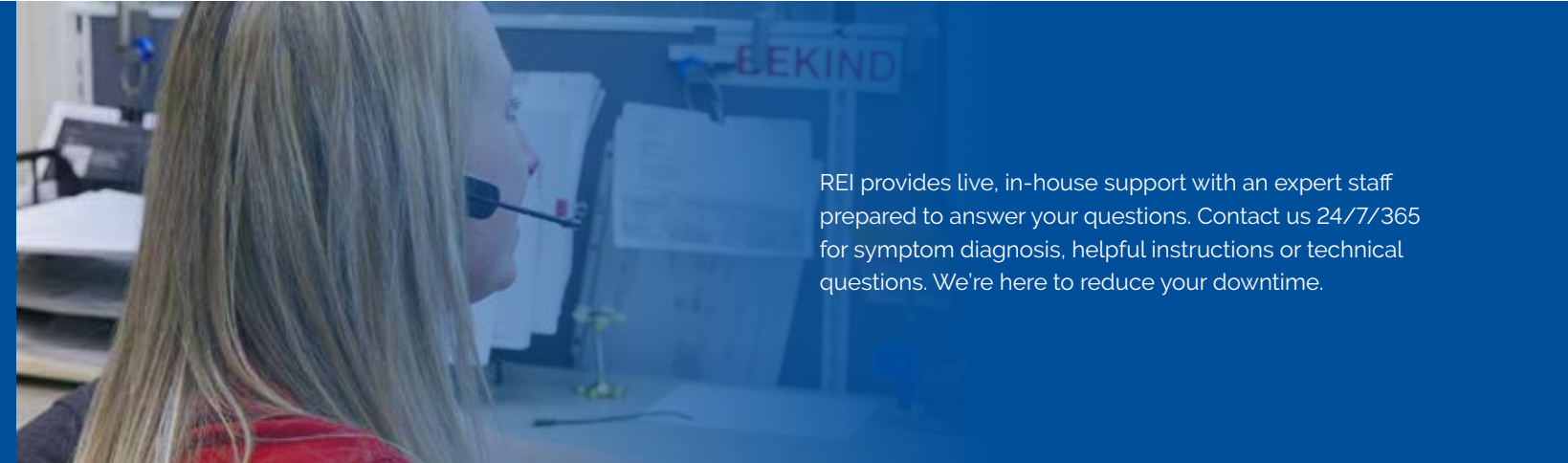


Compatibility is the cornerstone of REI harnesses. Constructed with rugged, professional-grade materials, expect reliable, secure connections to OEM radios and multimedia players. Choose from several legacy harnesses, harnesses for newer vehicles, or custom models. Access your favorite news and entertainment easily with harnesses available to fit vehicle makes and models from most U.S. manufacturers.

Contact your sales representative to find the right harnesses for your vehicles.

warranty & support

Support line: 877.726.4617



REI provides live, in-house support with an expert staff prepared to answer your questions. Contact us 24/7/365 for symptom diagnosis, helpful instructions or technical questions. We're here to reduce your downtime.

Ford E-40 Series Cutaway Radio Kit



513026

- ISO
- Power 4 speaker
- Applications: 2021 vehicles and later



513034

- Internal/external switch



561306



210180

Advanced Exchange Warranty

REI will send a replacement product to you within two business days, at no charge.

REI's Advanced Exchange Warranty is available on select REI products. Call REI Customer Service for details.

REI's Limited Warranty

Our warranty covers failures due to defects in materials and workmanship which occur during normal use. We will repair products, free of charge, from the date of original purchase as follows:

- **For 90 days** – microphones, speakers, antennas, housings, rechargeable batteries, remanufactured products and all non-warranty repairs (replaced parts and labor only)
- **For one year** – all other manufactured products
- **For three years** – select manufactured motorcoach products
- **For three years** – select surveillance equipment

For warranty and Advanced Exchange service, call 877.726.4617, Monday through Friday, 7 a.m. – 5 p.m. CST. If calling for a replacement part, please provide the REI part number and serial number of your defective product..

It's a fast and easy way to keep your business moving!

count on us around the clock



REI[®]

6534 L Street, Omaha, NE 68117
800.228.9275 | 402.339.2200
radioeng.com | 24/7/365 Support