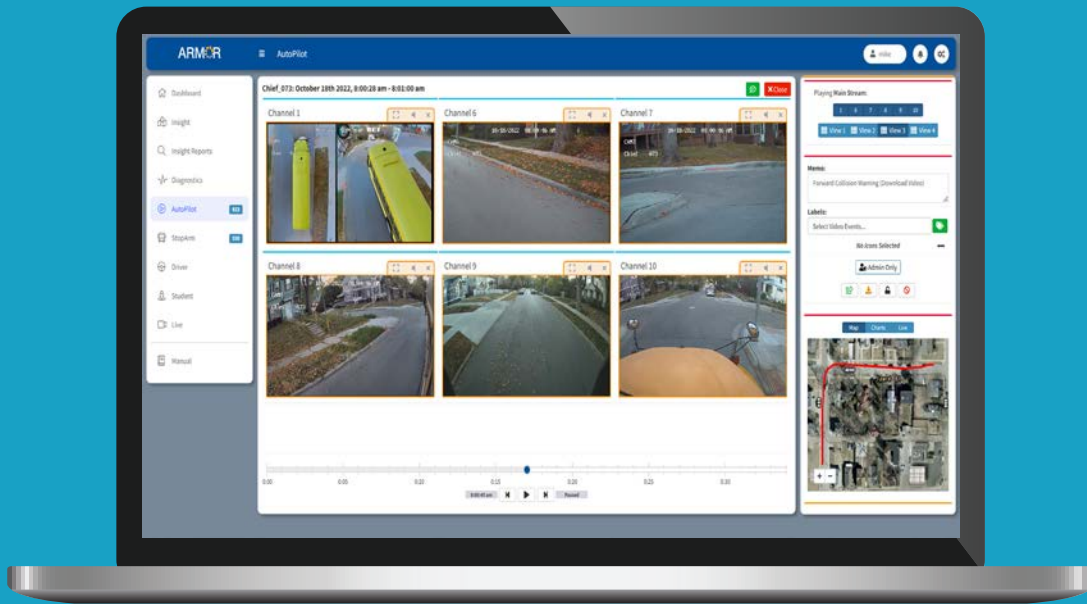


ARMOR™

Software Suite
by REI®



WIRELESS FLEET MANAGEMENT SOLUTIONS



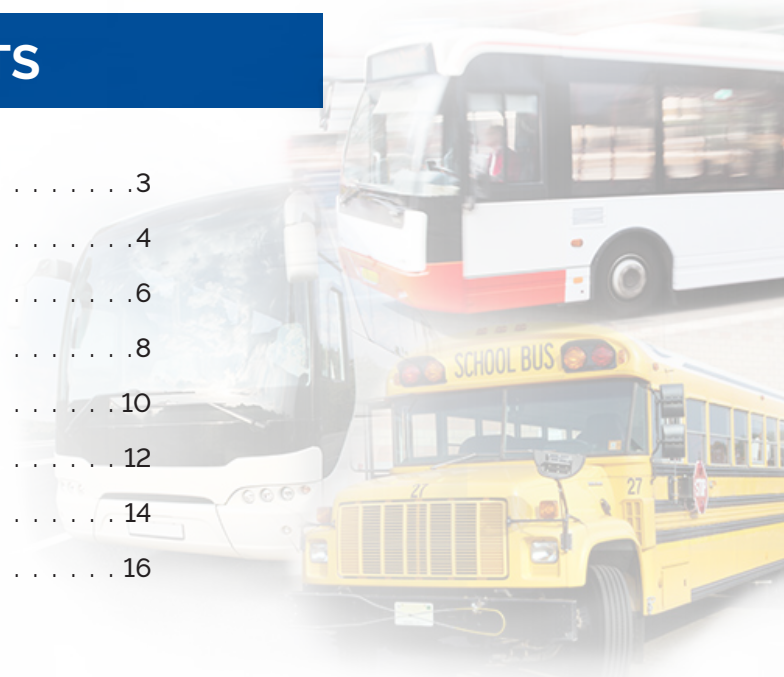
- Bus**
- Commercial
- Motorcoach
- School
- Transit
- Commercial Truck**
- Delivery
- Fleet
- Waste/Refuse
- Emergency Vehicle**
- Ambulance
- Fire Truck
- Mobile Command
- Police
- Agriculture**
- Construction**
- Dealers**
- OEM**

With ARMOR™ Software Suite, wireless fleet and surveillance management is as accessible as your internet-connected device. Integrate a complete surveillance system with its automated, adjustable modules and attain advanced, fleet monitoring, reporting and analysis – all in one place.

ARMOR streamlines and automates the entire process, saving you time and money.

CONTENTS










OVERVIEW	3
DASHBOARD	4
ADMIN/ACTIONS	6
AUTOPILOT	8
DIAGNOSTICS	10
INSIGHT	12
LIVE	14
STOP ARM	16



Advance fleet operations and safety with this all-in-one, automated solution.

Minimize time, stress and expenses related to fleet/surveillance management. Optimize efficiency, safety, and collaboration wirelessly via data collected by adjustable modules.

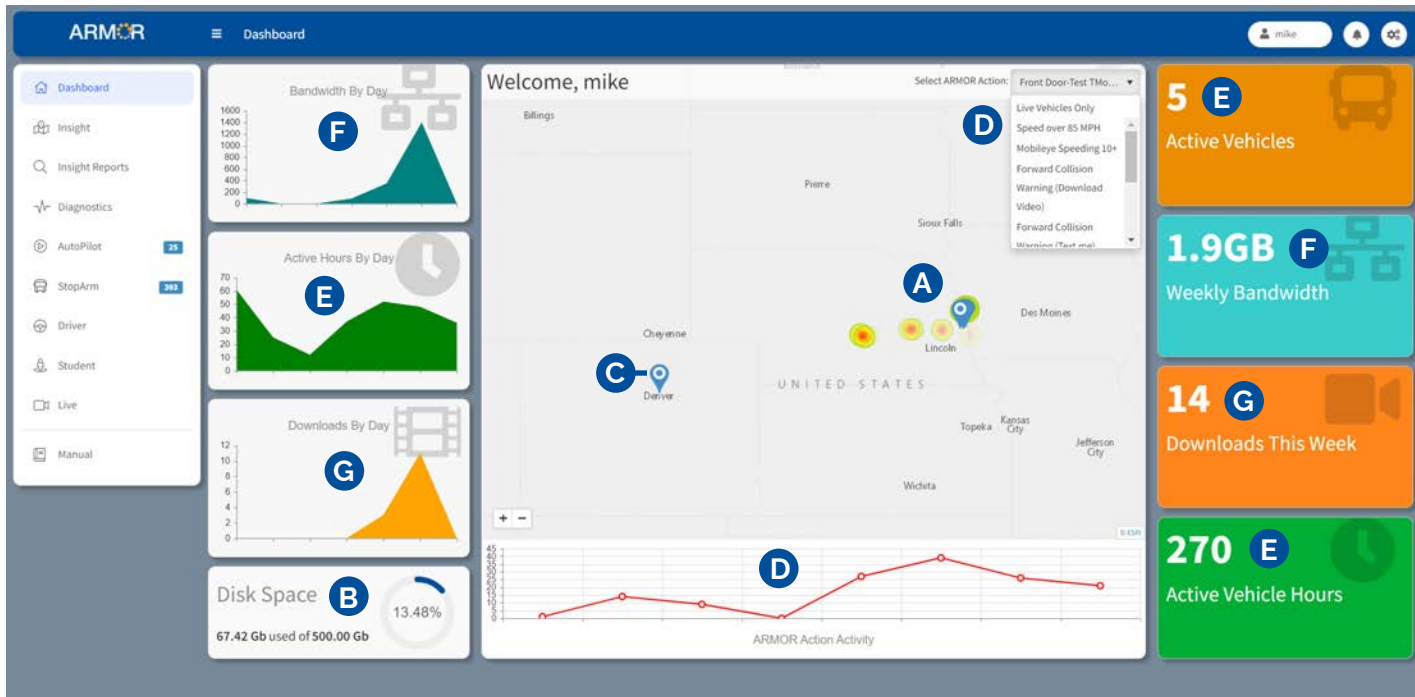
- ▶ Be alerted after event marker press
- ▶ Create event-based driver review with video
- ▶ Monitor vehicle idling time & obtain daily report
- ▶ Receive immediate alert if vehicle exits geofence
- ▶ Verify student pickup by searching front-door opens
- ▶ Log vehicle warning light for maintenance review

-  **No Pulling Hard Drives**
Automated & remote video downloads
-  **Save Time**
User-friendly interface
-  **Fast Answers/Resolutions**
24/7 access to downloaded data & video from anywhere
-  **Immediate Responses**
Real-time view capability
-  **No Waiting**
Automated software updates
-  **Save Travel Costs**
Remote DVR access capability (with on-premises or customer-provided cellular service)
-  **Save Money**
Reduced infrastructure/IT resources
-  **Improve Efficiency**
View data trends across fleets
-  **Secure**
Permission-only access to data

Watch the **ARMOR Overview Video**



Dashboard is your easy-access destination for fleet-wide data and reporting. Monitor its reliable, simple charts to maximize fleet efficiency and safety, minimize operational costs, and save time.



- A** Detect trends/potential hazards via mapped event hotspots
- B** Monitor server storage space
- C** Track vehicle(s) in real-time to answer questions quickly
- D** Analyze event details to prevent future occurrences
- E** Ensure proper vehicles are en route
- F** Maintain speedy data transmission and video downloads
- G** Count video downloads to uncover trends

↑ Maximize

- › **Efficiency** – view, assess and revise routes for better performance
- › **Productivity** – reduce management duties and free up time for other tasks
- › **Time & cost savings** – find trends to make decisions about fuel, maintenance and staff expenses
- › **Safety** – identify questionable locations, risky driving behaviors, and route discrepancies
- › **Peace of mind** – know events/data are securely captured, stored, and reported

Use Dashboard to:

Prevent server space shortage using a real-time readout.

Discover idling vehicle(s) during routes.

Set ARMOR Actions alerts to:

- › Detect vehicles exceeding speed parameters
- › See where events occur
- › Receive alerts about detected events

✓ Requirements

Vary according to the server management option you choose:

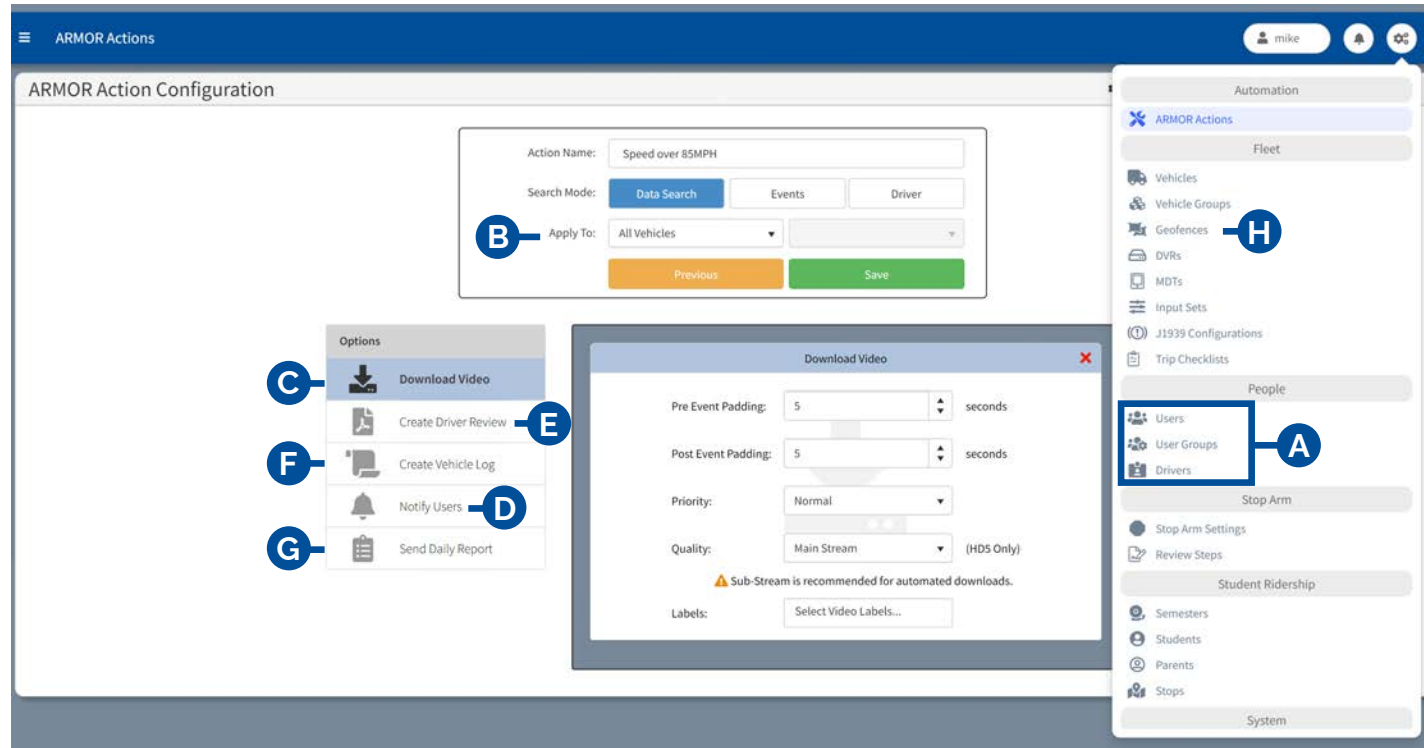
- › Self-managed, on-premises server **or**
- › Cloud-based server management by REI

[Compare options](#) and contact us for more information.

Watch ARMOR Video



Administration/Actions is your initial destination for assigning permissions, parameters, thresholds and automated procedures for data/video collection and reports. Save time and increase management efficiency from this centralized tab.



- A** Authorize individual/group access to specific tabs
- B** Designate events to be detected by single vehicle or groups
- C** Select event video to be downloaded automatically for prompt review
- D** Set up automated event notifications to inform staff quickly
- E** Initiate automated driver reviews (with video) to assess driving behaviors
- F** Create vehicle logs for automated diagnostic updates/warnings
- G** Launch automated daily activity reports and email them to authorized users
- H** Delineate geofences for single vehicles, vehicle groups, schools or districts to track locations

↑ Maximize

- ▶ **Collaboration** – inform staff about events and diagnostics simultaneously via notifications and reports
- ▶ **Productivity** – configure actions to minimize your data/video collection duties, freeing time for other tasks
- ▶ **Efficiency** – gather a wealth of fleet information with minimal effort
- ▶ **Safety** – set up timely data/video alerts to help resolve event and fleet health issues quickly
- ▶ **Accuracy** – minimize the potential for human error with automated, reliable data/video collection
- ▶ **Fleet diagnostics** – update users about fleet and surveillance equipment health, enabling them to anticipate/rectify issues swiftly
- ▶ **Peace of mind** – rest easier knowing event/fleet health details are reliably captured, monitored and reported
- ▶ **Time savings** – configure one tab, then the automation does the work for you

Use Administration/Actions to:

- Set up an alert about a geofence violation.
- Request an automatic video download with 3 minutes of pre/post-event padding.
- Configure notifications about missing hard drives on fleet vehicles.

✓ Requirements

Vary according to the server management option you choose:

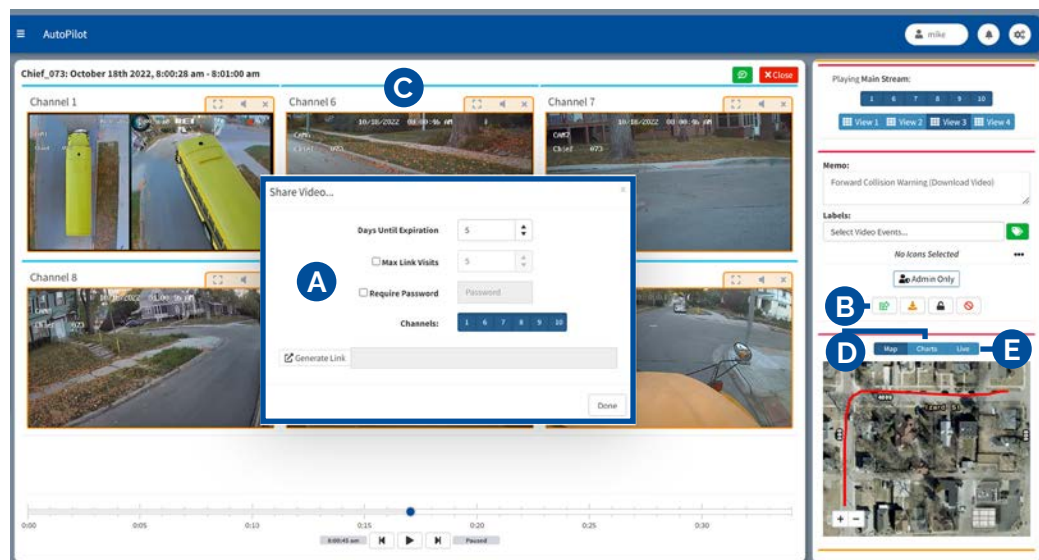
- ▶ Self-managed, on-premises server **or**
- ▶ Cloud-based server management by REI

[Compare options](#) and contact us for more information.

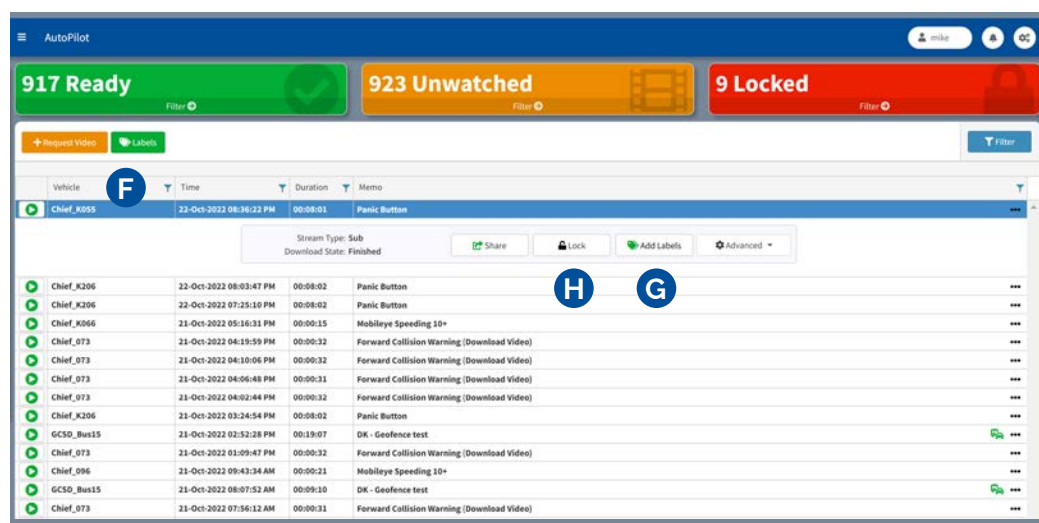
Learn More About Administration/Actions



AutoPilot is an archive of manually requested and auto-downloaded event videos from your fleet. Filter videos for review based on criteria important to you and save hours of search time.



- A** Share password-protected video links with others via email
- B** Request mainstream video of an event to see sharper details
- C** View up to six channels from a single vehicle at once
- D** Monitor vehicle speed and acceleration to assess driving behaviors (REI accelerometer required.)
- E** Verify use of turn signals, door opens, brakes, etc.
- F** Review videos from vehicles, times, dates, locations or events you specify
- G** Add labels to videos for easy identification
- H** Lock video to prevent deletion prior to sharing with law enforcement



↑ Maximize

- › **Efficiency** – access videos in one, convenient place and save time
- › **Productivity** – view videos without having to find/pull hard drives
- › **Cost savings** – save travel time and expenses by minimizing trips to pull hard drives
- › **Safety** – check surveillance views and vehicle health details at any time to react promptly
- › **Peace of mind** – relax knowing events are reliably detected, captured and stored
- › **Collaboration** – enable video review with those inside/outside your organization through secure links

Use AutoPilot to:

- Download videos to reveal fleet events.
- Restrict video access to administration only when applicable
- Limit the number of times a video may be viewed.
- View video to verify an event at a particular time or location
- Share video via email in approximately 10 seconds.
- Manually request video from a specific bus, time & date.

✓ Requirements

Vary according to the server management option you choose:

- › Self-managed, on-premises server **or**
- › Cloud-based server management by REI

[Compare options](#) and contact us for more information.

Learn More About AutoPilot



Diagnostics provides daily, automated health updates about your vehicles' engines (J1939 CAN-bus cables required) and REI surveillance systems. Utilize its reliable data to mitigate and prevent maintenance issues, enhance safety, save time and reduce operational costs.

The screenshot shows a dashboard with a table of vehicles. At the top, there are three status bars: 10 Healthy (green), 11 Warning (orange), and 8 Severe (red). A table below lists vehicles with columns for Name, Group, Last Reported, Voltage, DVR Series, FW Version, MCU Version, IP Address, Fuel Level, Odometer, and Engine Hours. Callouts A-H point to specific features: A (notifications), B (inputs), C (video logs), D (severity settings), E (fleet-wide diagnostics), F (fuel efficiency gauge), G (DVR data), and H (remote DVR adjustment).

- A** Receive vehicle status notifications before departure
- B** Oversee configured inputs to rectify problems quickly (hard drives, voltage, signals, software/firmware, etc.)
- C** Monitor surveillance video/audio from vehicles en route to respond promptly (external router required)
- D** Analyze Diagnostics Severity Settings to uncover trends
- E** Assess fleet-wide diagnostics at one source to save time
- F** Gauge fuel efficiency with mileage and gas data (J1939 cable required)
- G** Confirm download of all DVR data/video
- H** Adjust DVRs remotely (external router required for cloud customers or Wi-Fi for on-premises customers)

The screenshot shows the 'Diagnostics Severity Settings' page. It has three main sections: DVR, Vehicle, and ARMOR. Each section contains a list of events with severity levels (Info, Warning, Severe) and a 'Done' button at the bottom.

Maximize

- ▶ **Efficiency** – evaluate fleet health from one source
- ▶ **Productivity** – reduce on-site maintenance checks, enabling time for other tasks
- ▶ **Cost savings** – detect problems early to prevent/mitigate major repairs
- ▶ **Time savings** – minimize travel to pull hard drives
- ▶ **Safety** – anticipate/correct problems before vehicles are dispatched
- ▶ **Peace of mind** – 24/7 access to downloaded diagnostic data from anywhere

Use Diagnostics to:

- Troubleshoot video loss by camera.
- Receive notification about inactive DVR.
- Identify/remedy low battery voltage.
- Be alerted to problems with doors, brakes and signals.

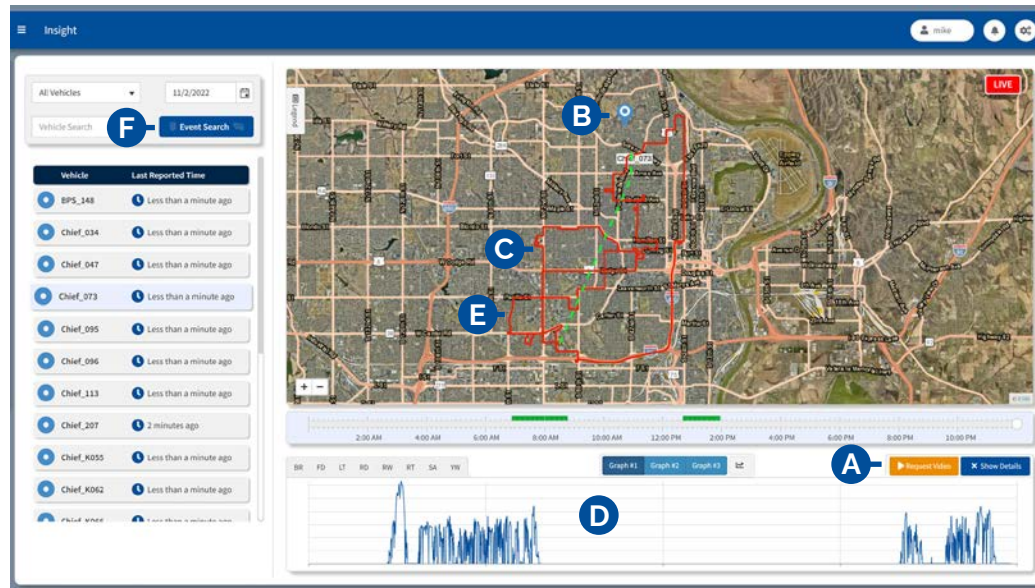
Requirements

Vary according to the server management option you choose:

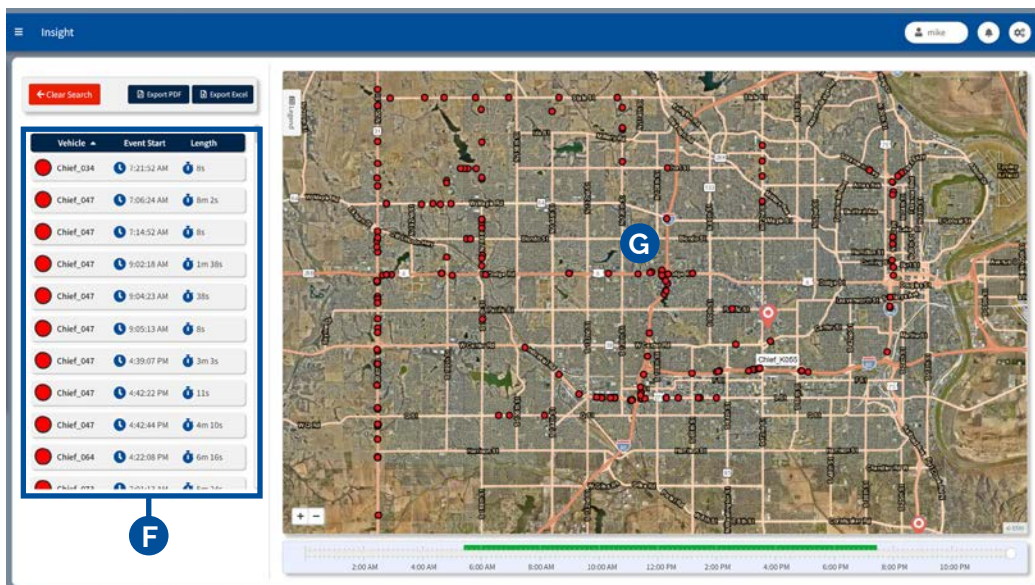
- ▶ Self-managed, on-premises server **or**
- ▶ Cloud-based server management by REI

[Compare options](#) and contact us for more information.

Insight provides real-time mapped vehicle locations, historical/current routes, data graphs, time- or location-specific event videos, and full reports. Review its maps and data to quickly identify vehicle and event details.



- A** Request video download by location or time, enabling prompt review
- B** Monitor fleet progress with vehicle locators
- C** Follow breadcrumb trails for data about past events/routes
- D** Oversee vehicle speed, battery voltage, etc. to detect problems
- E** View vehicle data/video by clicking on the route line
- F** Configure detailed event reports for individual vehicles or groups
- G** Uncover trends with mapped event locators



↑ Maximize

- › **Efficiency** – view/adjust routes to save time & fuel costs
- › **Productivity** – monitor routes for consolidation opportunities
- › **Time savings** – supervise fleet from one source vs. several
- › **Safety** – detect potential problems and act to mitigate/prevent them
- › **Peace of mind** – obtain answers quickly with reliable data/video

Use Insight to:

- Verify the location and time of an event.
- Request video of a hard-braking event at a specific location. (REI accelerometer required.)
- Search for speed events of 5 mph over posted limits.
- Confirm front-door opens at stops.
- Locate/identify stranded vehicle.
- See event hotspots on map to detect trends/problems.

✓ Requirements

Vary according to the server management option you choose:

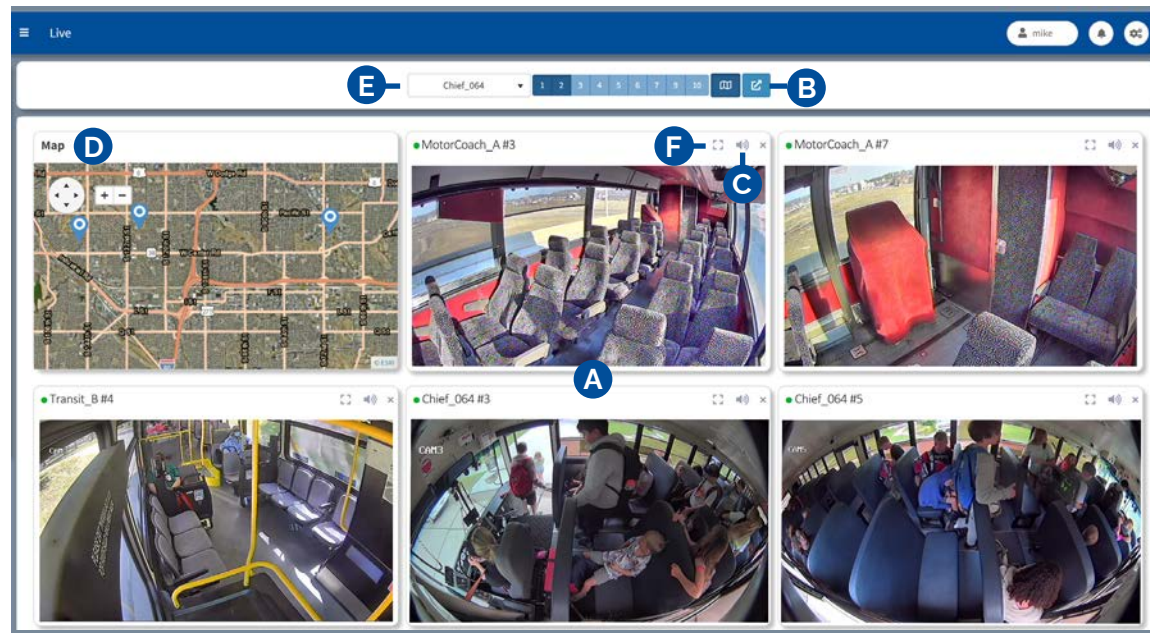
- › Self-managed, on-premises server *or*
- › Cloud-based server management by REI

[Compare options](#) and contact us for more information.

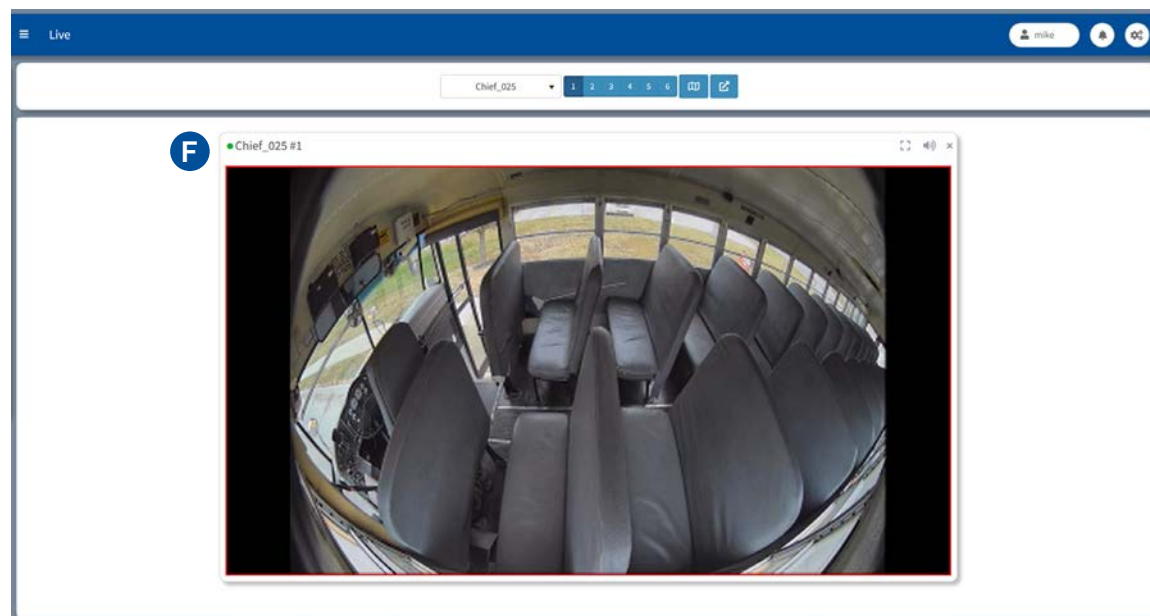
Learn More About Insight



ARMOR Live enables access to cloud-based or private-network-based surveillance views from multiple fleet vehicles. Know what's happening on/around your vehicles and respond quickly to maintain safety.



- A** Watch views from up to five vehicles on one screen
- B** Verify operation/recording by vehicles' DVRs
- C** Hear sound from audio-equipped cameras
- D** See vehicle locations on map
- E** Display selected views from specific vehicles
- F** Enlarge view to see small details



↑ Maximize

- › **Efficiency** – watch/monitor multiple views on one screen
- › **Cost & time savings** – minimize trips to vehicles to assess events
- › **Safety** – spot check activities in/around vehicles at any time
- › **Peace of mind** – know you're able to watch events shortly after receiving alerts
- › **Collaboration** – allow several users to watch views simultaneously

Use Live to:

- Catch a rider vandalizing a bus and contact driver promptly.
- Count passengers at a particular time on a specific bus.
- Confirm ridership on a vehicle.
- View and discuss bullying event with other users.
- Pinpoint the location of an event in progress.
- Observe assault in progress, enabling timely call to law enforcement.
- Assess driver behaviors.

✓ Requirements

Vary according to the server management option you choose:

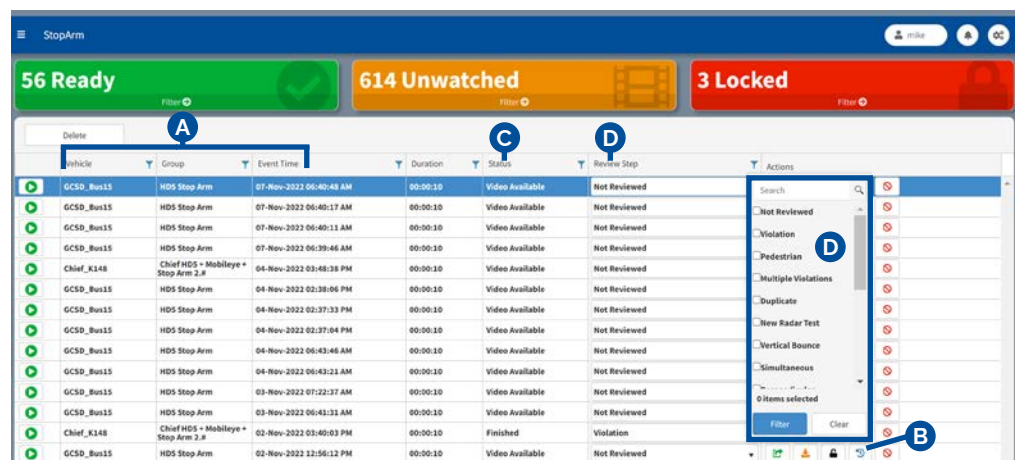
- › Self-managed, on-premises server *or*
- › Cloud-based server management by REI

[Compare options](#) and contact us for more information.

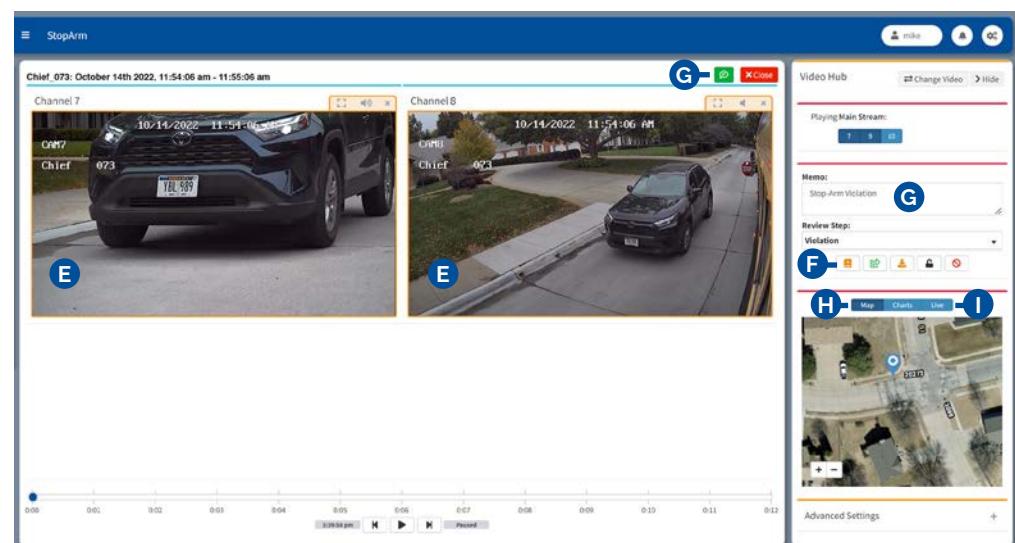
Learn More About Live



StopArm is a centralized source for downloaded videos of event details and violators' license plates. Save time by locating videos quickly and easily to review, share and assign next steps in the evaluation/reporting process.



- A** Filter videos by vehicle, vehicle group & time/date
- B** Track users' video reviews, download status, video playback & create file history report
- C** Assign video status notes & filter by status
- D** Add notes about videos & filter by note



- E** Watch multiple, recorded views of violation
- F** Review auto-filled notice of violation before submission to law enforcement
- G** Include detailed memos & comments for users
- H** See violation location on map
- I** Verify fleet vehicle was stopped & stop-arm extended during violation

↑ Maximize

- › **Efficiency** – evaluate videos, answer questions and set review steps, all in one place
- › **Productivity** – free up time for other tasks with speedy search and review functions
- › **Cost savings** – help reduce insurance premiums
- › **Safety** – deter repeat violations, creating safer communities
- › **Peace of mind** – know violations are recorded/reported and have indisputable proof
- › **Collaboration** – easily share videos with others inside/outside your operation

Use StopArm to:

- Confirm violator's license plate numbers/letters.
- Search for videos from a specific time frame.
- Determine if stop-camera system was triggered by a pedestrian.
- Convey video status to others within operation.
- Watch/pause multiple mainstream video channels.
- Generate a report about a specific violation.

✓ Requirements

- › Four-lane, stop-arm pod assembly
- › Self-managed, on-premises server *or**
- › Cloud-based server management by REI*

*Requirements vary according to the server management option you choose. [Compare options](#) and contact us for more information.

Learn More About StopArm





REI[®]

6534 L Street, Omaha, NE 68117
800.228.9275 | 402.339.2200
radioeng.com | 24/7/365 Support