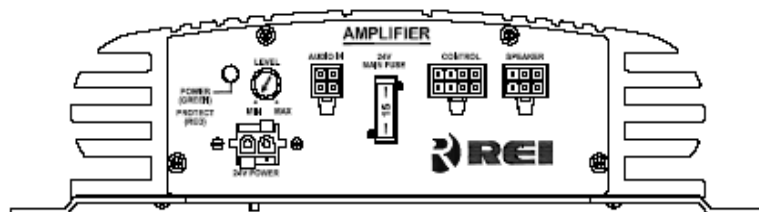
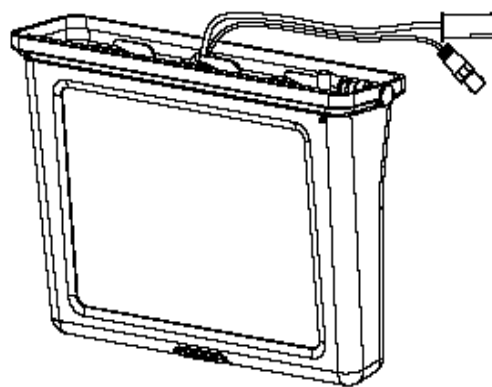
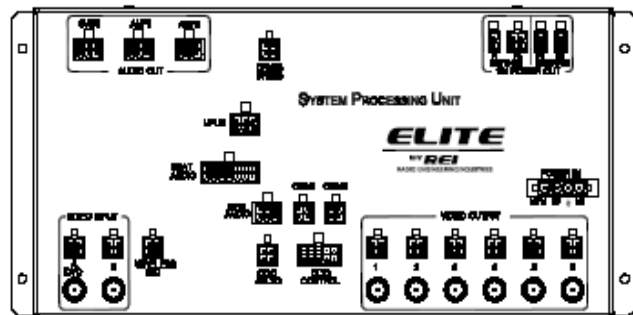
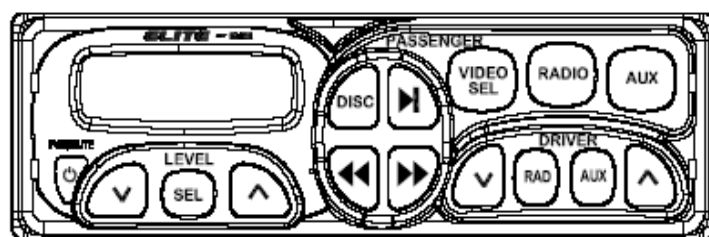


# The **ELITE** Series

## AUDIO/VIDEO ENTERTAINMENT SYSTEM



RADIO ENGINEERING INDUSTRIES  
www.radioeng.com

### Troubleshooting Flowchart

6554 L' STREET  
OMAHA, NE 68117  
402-339-2200  
FAX: 402-339-1704

TOLL FREE  
TECH SUPPORT OR SERVICE:  
877-726-4617  
800-228-9275

# QUICK START TROUBLESHOOTING

- TO EFFECTIVELY TROUBLESHOOT THE ELITE SYSTEM, THE FOLLOWING TOOLS WILL BE NEEDED.
  - ASSORTMENT OF HAND TOOLS
  - DIGITAL VOLT METER
  - MINI-FIT HAND CRIMPERS
  - AUDIO SIGNAL TRACER/INJECTOR
  
- PERFORM THE FOLLOWING QUICK CHECKS BEFORE PROCEEDING TO THE TROUBLESHOOTING FLOW CHARTS.
  - WILL THE CONTROL HEAD AND RADIO POWER ON? SEE “SYSTEM DOWN” TO TROUBLE SHOOT.
  - CHECK STATUS AND VERSIONS FOR THE MPU, SPU AND VIDEO SOURCE.. FIGURE 1 SHOWS AN EXAMPLE.
  - DOES THE “LINK” LIGHT ON THE SPU FLASH? SEE “NO COMMUNICATION, DATA COMM LINE”.
  - WILL THE AUDIO PLAY LONGER THAN 2 MINUTES? IF NOT, THERE LIKELY IS A CORRUPT DATA COMM SIGNAL.
  - CHECK THE VARIOUS AUDIO SOURCES TO DETERMINE INDIVIDUAL OPERATION. THE RADIO AND THE AUX SOURCE SHOULD PLAY OVER THE DRIVER SPEAKERS WHEN SELECTED.
  - CHECK THAT VIDEO IS DISPLAYED ON THE MONITORS.
  - CONFIRM THAT THE VARIOUS LIGHTS ON THE SPU WILL ILLUMINATE AT THE PROPER TIME.
    - RADIO, CDC, AUX, VIDEO A & B, PA AND MIX WILL ILLUMINATE WHEN THOSE MODES ARE SELECTED.
    - 12V MON AND 24V MON ARE DEPENDENT ON THE SPU MONITOR MODE PROGRAMMED INTO THE CONTROL HEAD DURING THE SET UP. REFER TO FIGURE 2 AND CHART 2 FOR CLARIFICATION.
    - “POWER ON” ILLUMINATES WHEN THE SYSTEM IS POWERED ON WHILE THE “PWR 24” STAYS LIT TO INDICATE 24 VOLT DC IS APPLIED TO SPU.
    - THE “LINK” WILL FLASH INDICATING DATA COMMUNICATION.

# SPU MONITOR MODE CHARTS

SPU MONITOR LOAD SWITCHING, VOLTAGE AT J-PLUG				
	ENTER VIDEO MODE		LEAVING VIDEO MODE	
MODE	12V TAP PIN 3	24V TAP PIN 4	12V TAP PIN 3	24V TAP PIN 4
0	SWITCHED ON	SWITCHED ON	SWITCHED OFF	SWITCHED OFF
1	SWITCHED ON	ALWAYS ON	SWITCHED OFF	ALWAYS ON
2	ALWAYS ON	SWITCHED ON	ALWAYS ON	SWITCHED OFF
3	SWITCHED ON	ALWAYS OFF	SWITCHED OFF	ALWAYS OFF
4	ALWAYS OFF	SWITCHED ON	ALWAYS OFF	SWITCHED OFF

Chart 1: Voltage present at SPU J-plug to power monitors. Mode 4 is the default.

SPU "12V MON" AND "24V MON" LED ILLUMINATION				
	VIDEO A/B SELECTED		VIDEO A/B NOT SELECTED	
MODE	12V MON	24V MON	12V MON	24V MON
0	ON	ON	OFF	OFF
1	ON	ON	OFF	ON
2	ON	ON	ON	OFF
3	ON	OFF	OFF	OFF
4	OFF	ON	OFF	OFF

Chart 2: SPU "12V MON" and "24V MON" illumination guide.

# DISPLAY EXAMPLES



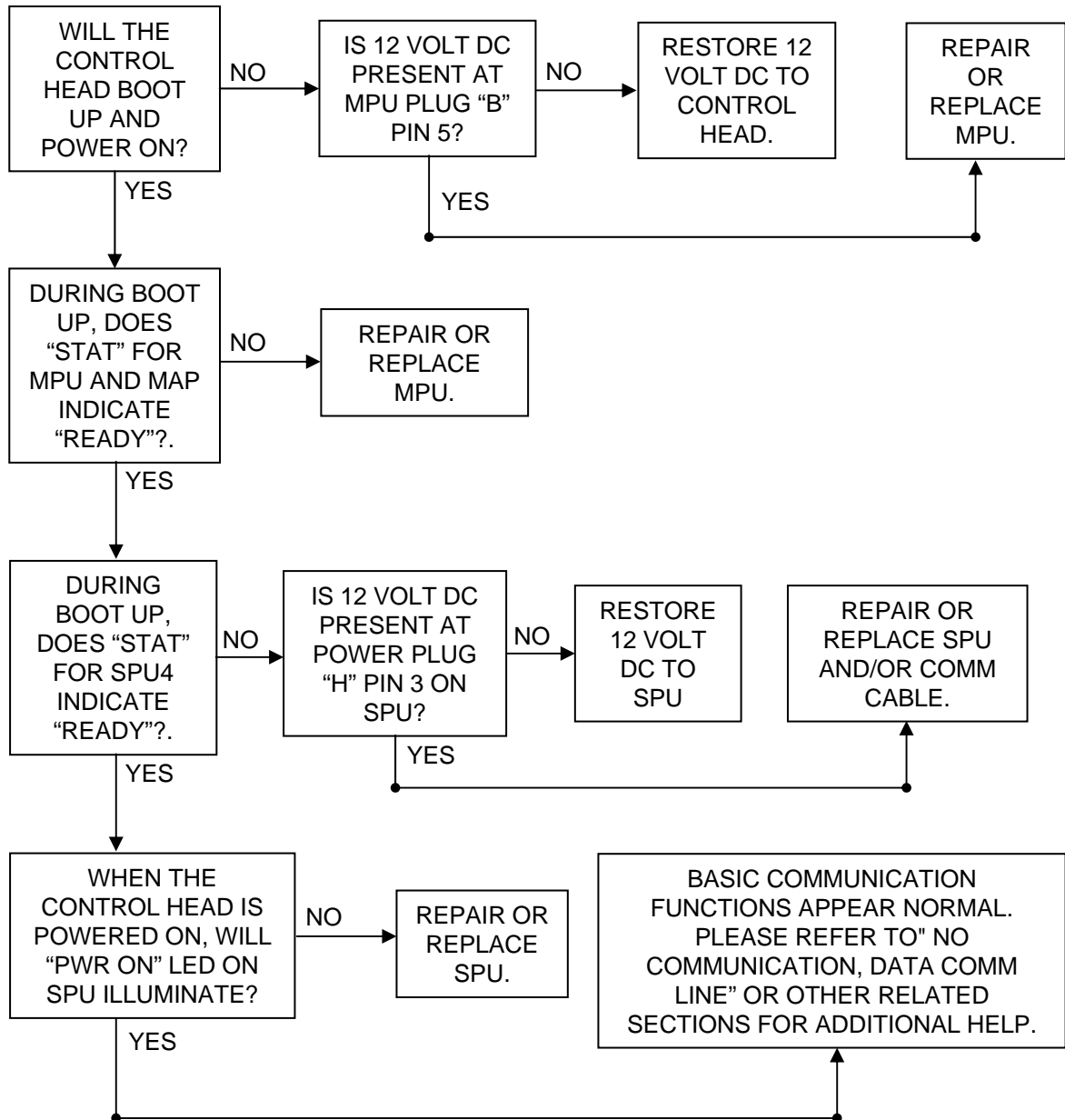
Figure 1: Example of "Stat" and "Ver" display



Figure 2: Example of the SPU Monitor Mode settings.

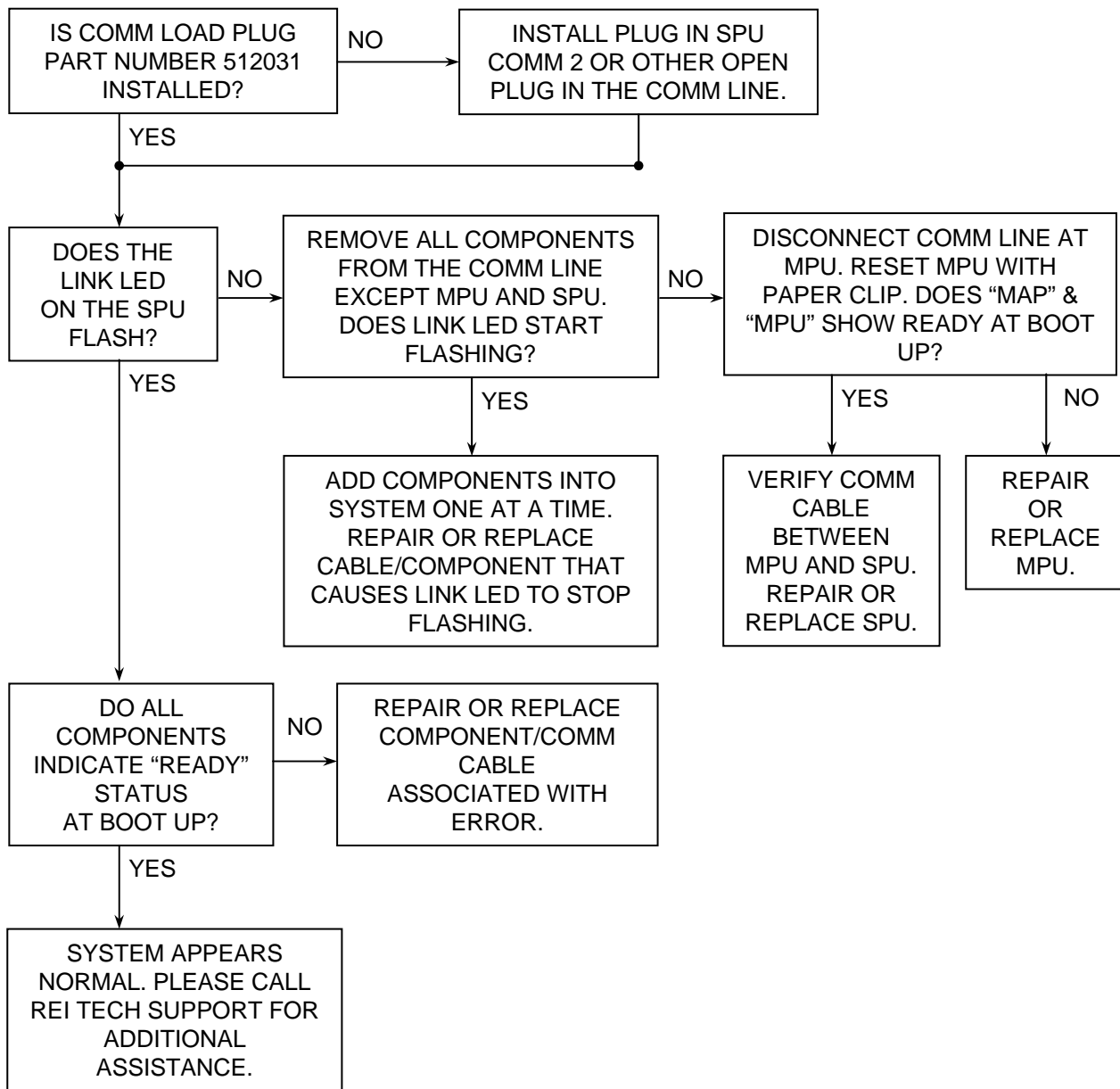
# SYSTEM DOWN

NOTE: DURING INITIAL POWER UP OR BOOT UP, VERIFY THE DEVICE STATUS AND FIRMWARE VERSIONS OF ALL COMPONENTS INSTALLED IN SYSTEM.



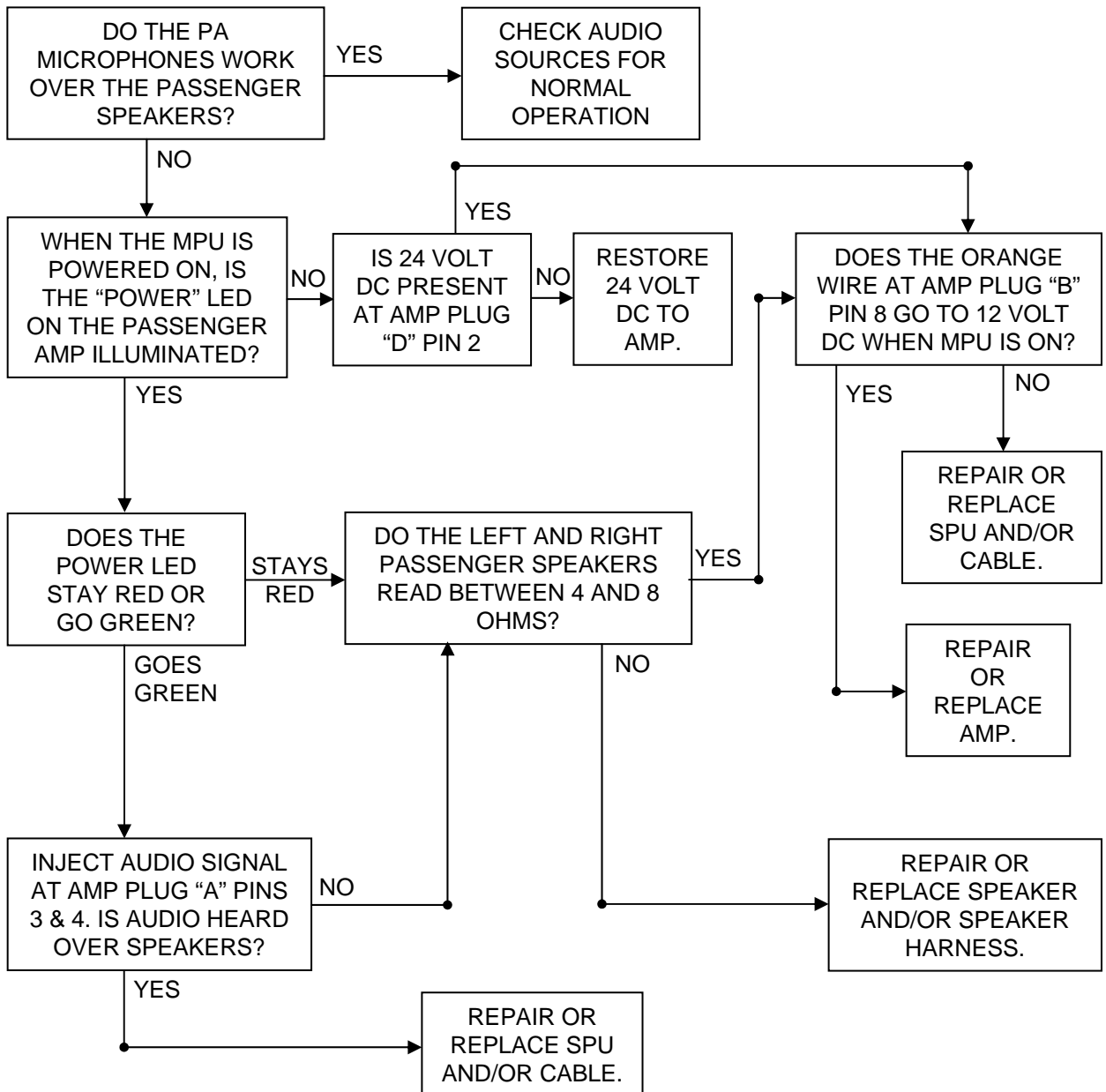
# NO COMMUNICATION, DATA COMM LINE

NOTE: DURING INITIAL POWER UP OR BOOT UP, VERIFY THE DEVICE STATUS AND FIRMWARE VERSIONS OF ALL COMPONENTS INSTALLED IN SYSTEM.



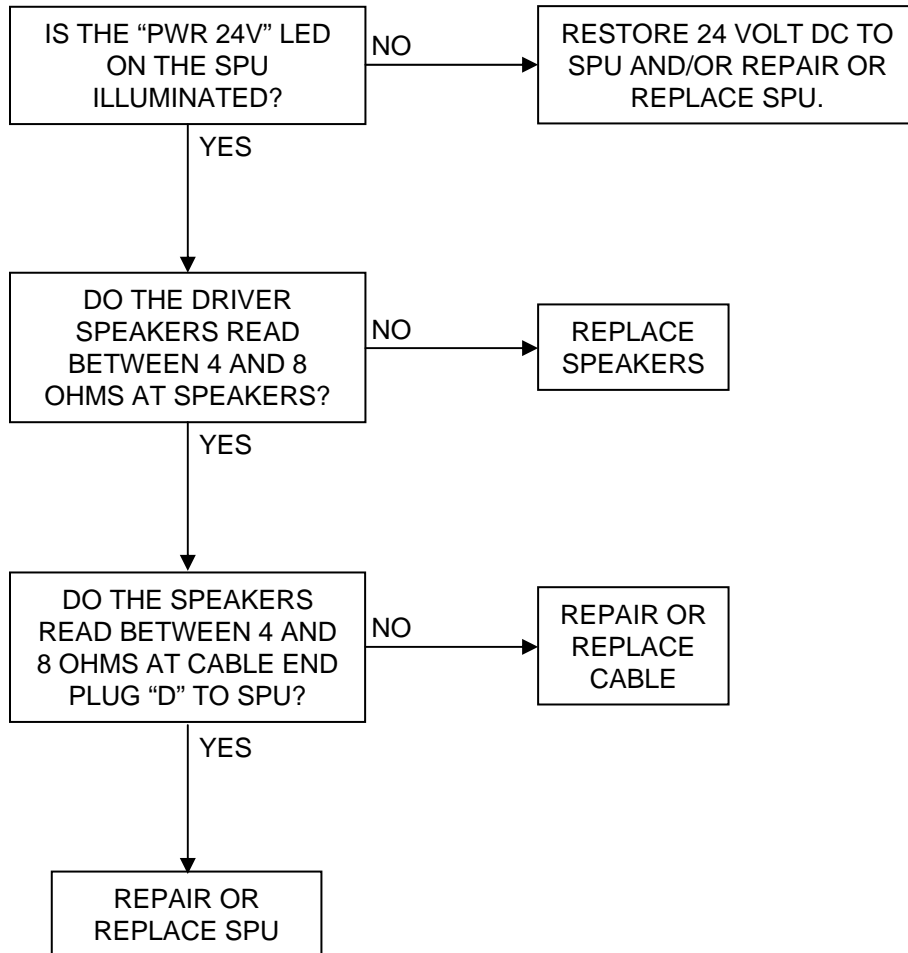
# NO PASSENGER SPEAKER AUDIO

NOTE : VERIFY THAT MPU AND SPU WILL POWER ON AND PA MICROPHONES OPERATE BEFORE PROCEEDING. SEE "SYSTEM DOWN" AND "ELITE PA PROBLEMS" FOR ADDITIONAL DETAILS.



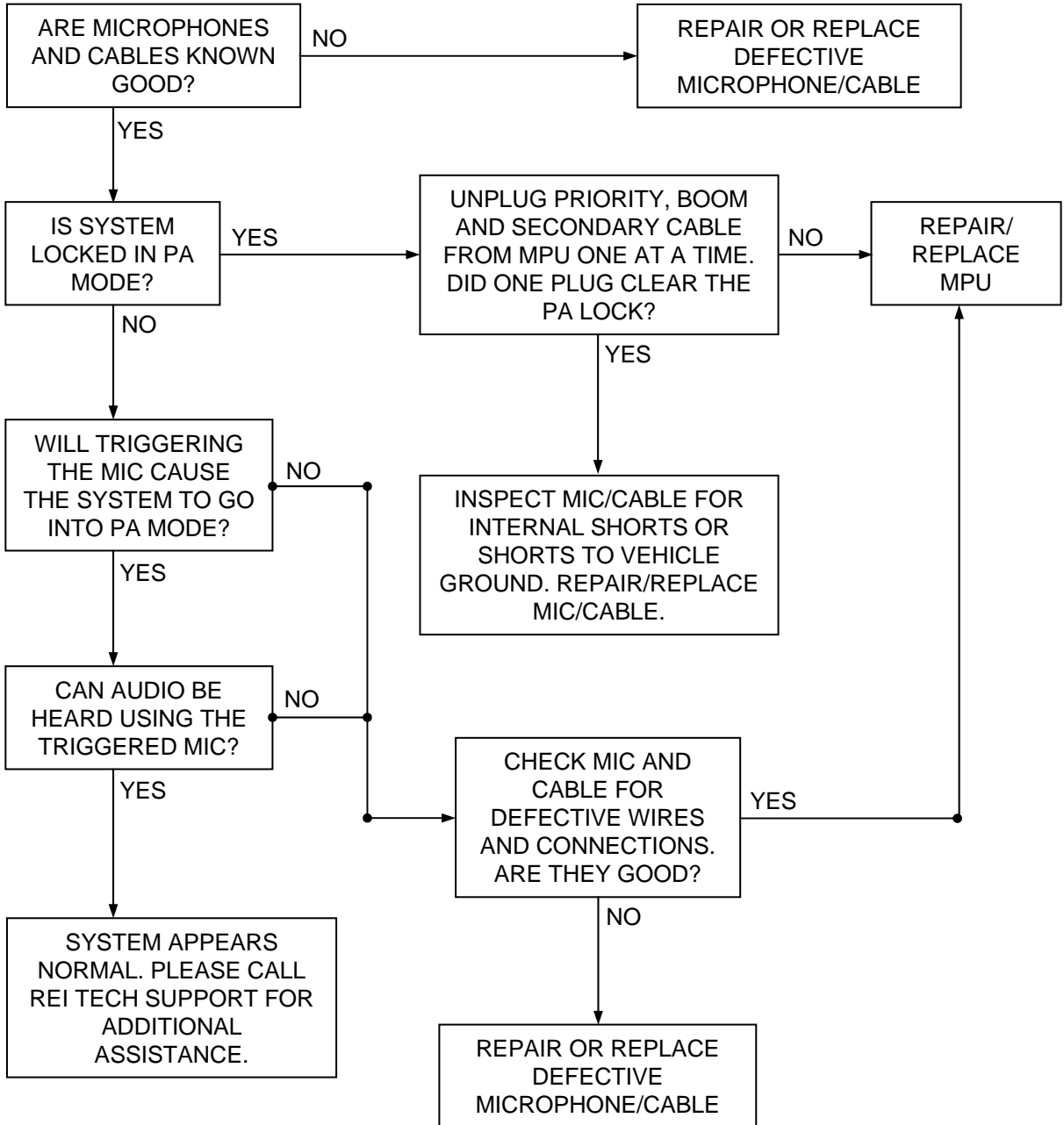
# NO DRIVER SPEAKER AUDIO

Note: This assumes that the radio can be heard over the passenger speakers.



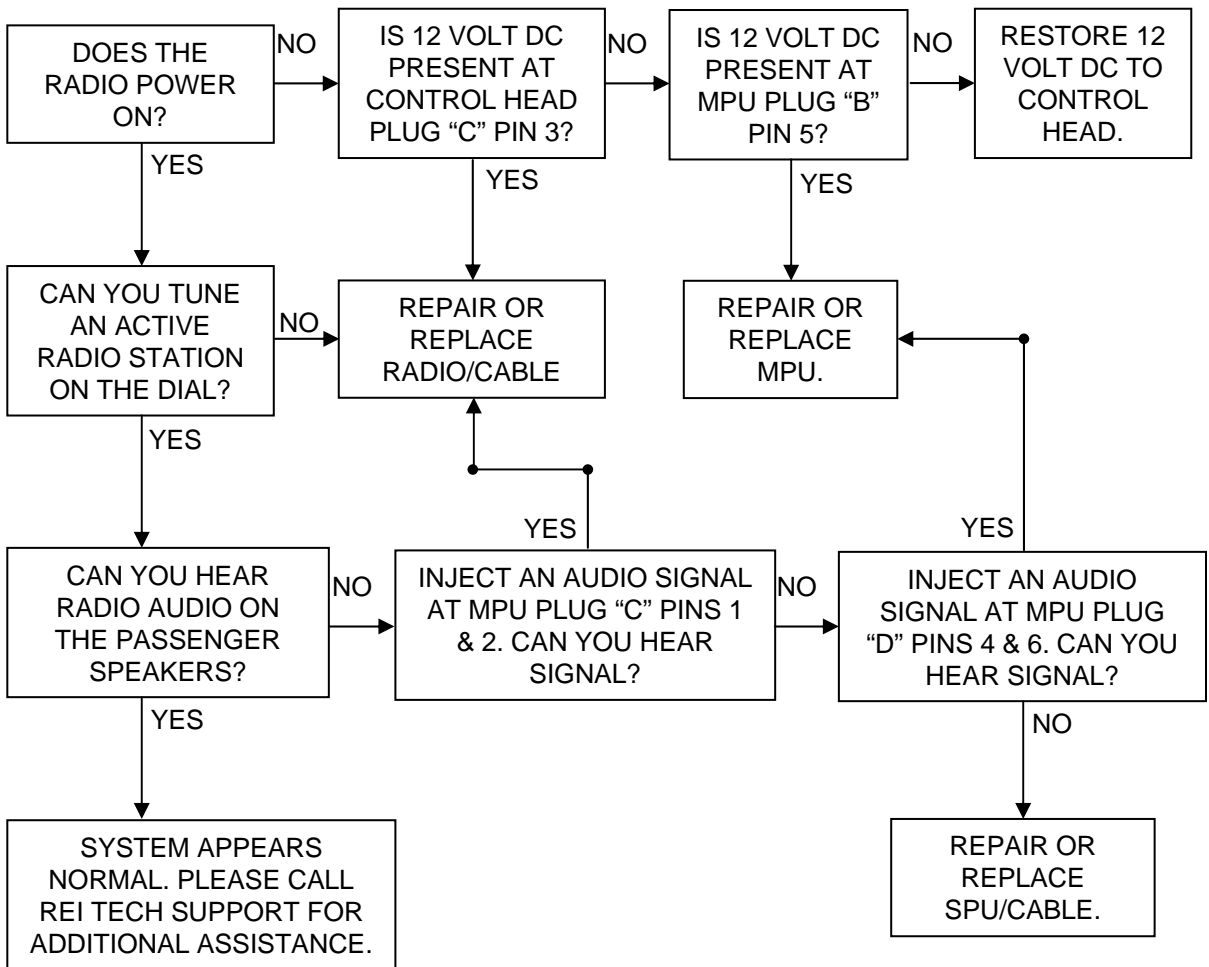
# ELITE PA PROBLEMS

Note: This assumes that at least the radio audio can be heard over the passenger speakers.

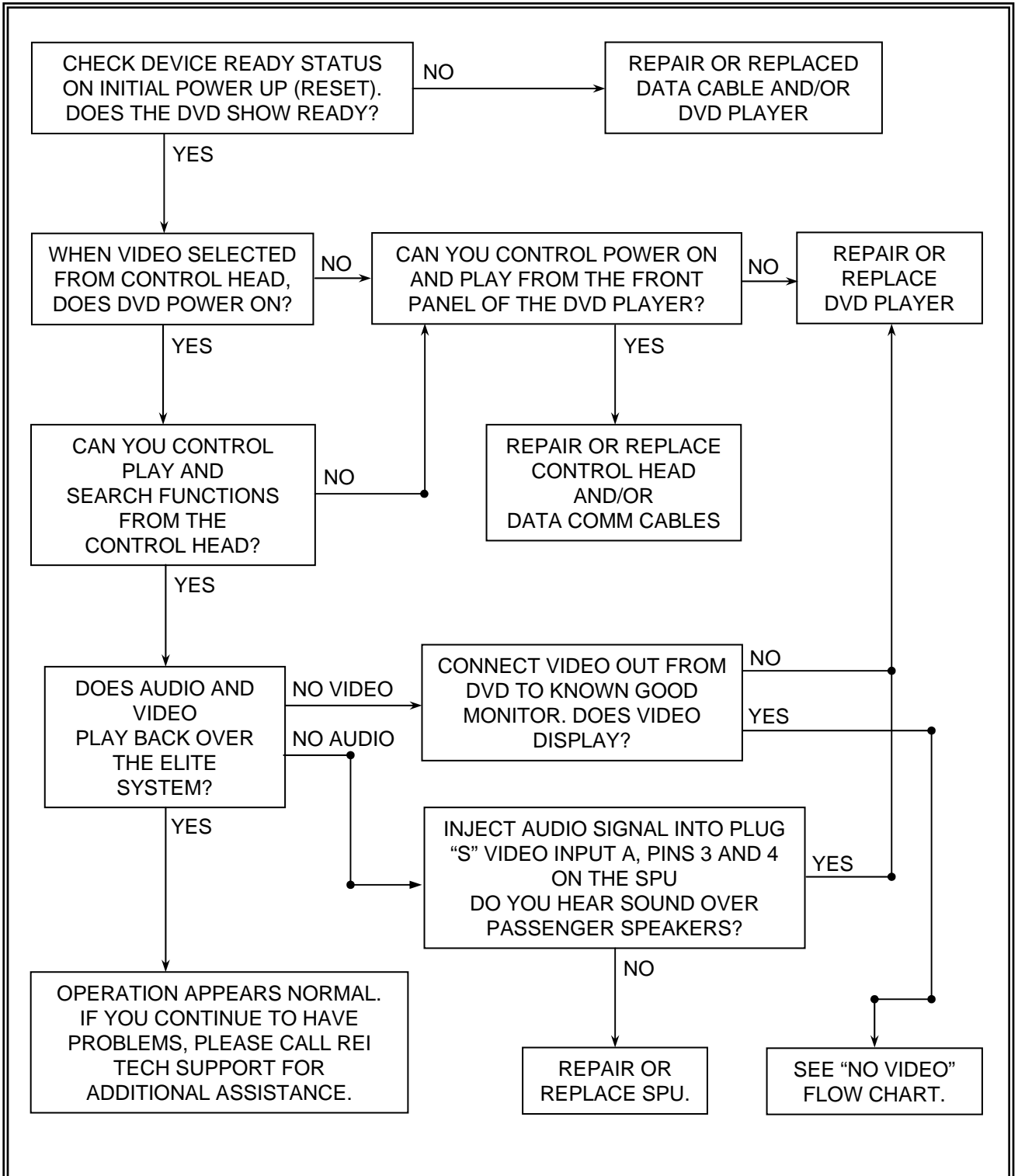


# RADIO NOT WORKING

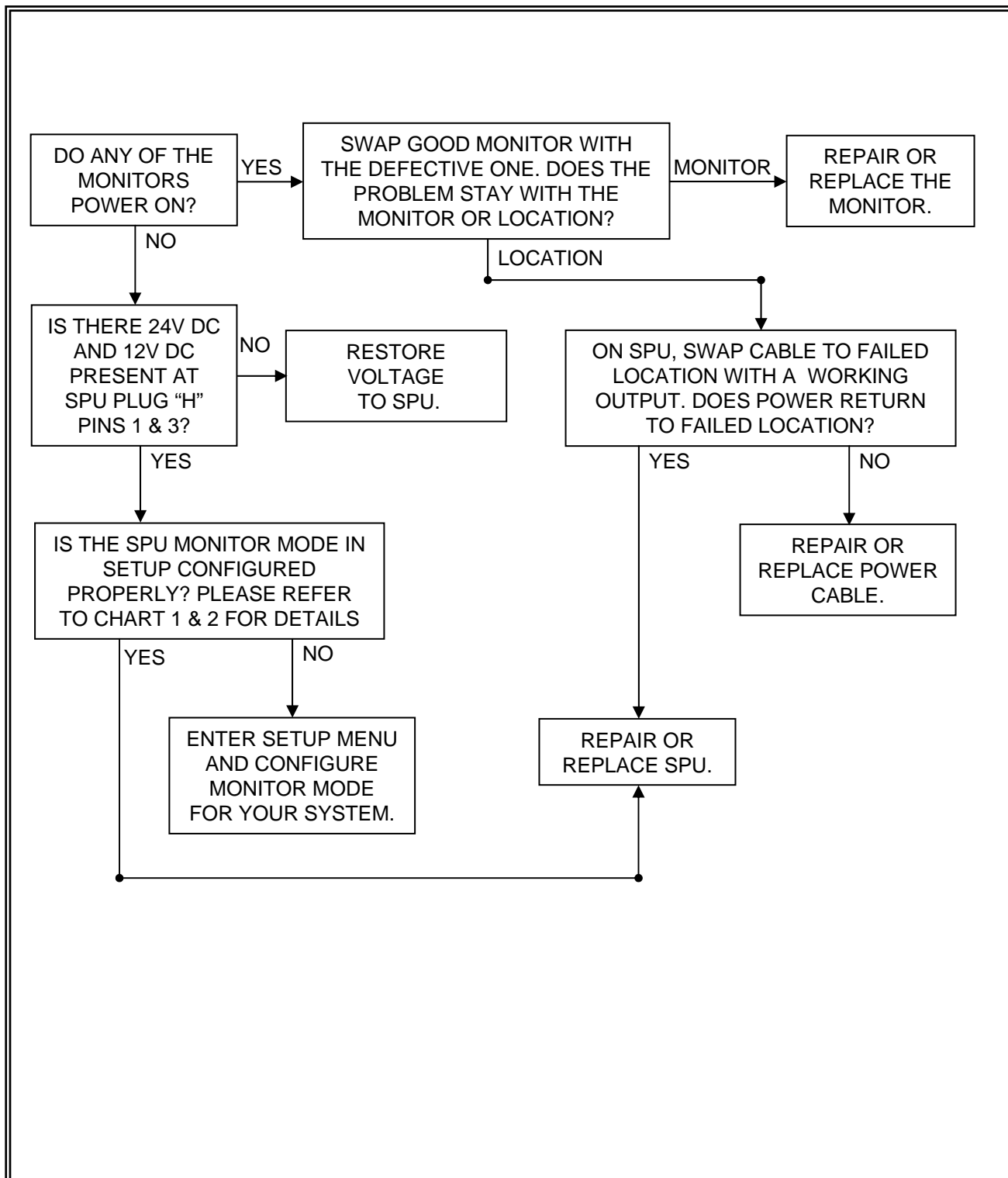
Note: This assumes that at least the PA audio can be heard over the passenger speakers.



# ELITE DVD AUDIO/VIDEO PLAYBACK



# NO POWER TO THE MONITORS



# NO VIDEO ON MONITORS

Note: This assumes that the DVD player or other video source is functional.

